

Air Purifier APP operation guide

I. How to connect the APP:

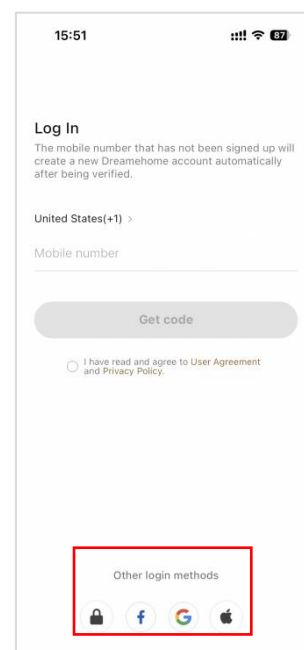
1. Scan the QR code on the machine or search "DREAME"



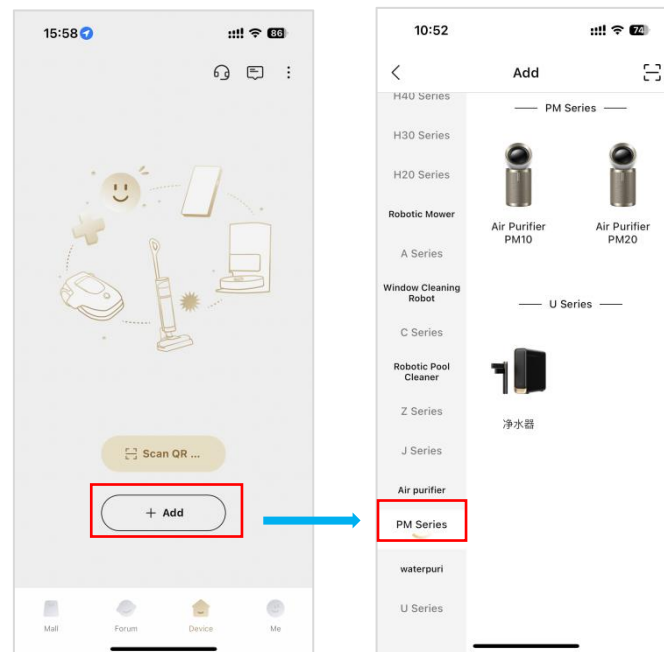
2. Download and install the app in your app store



3. If you are a first time user, Tap Register and then finish registration to log in. You can also choose other login methods.

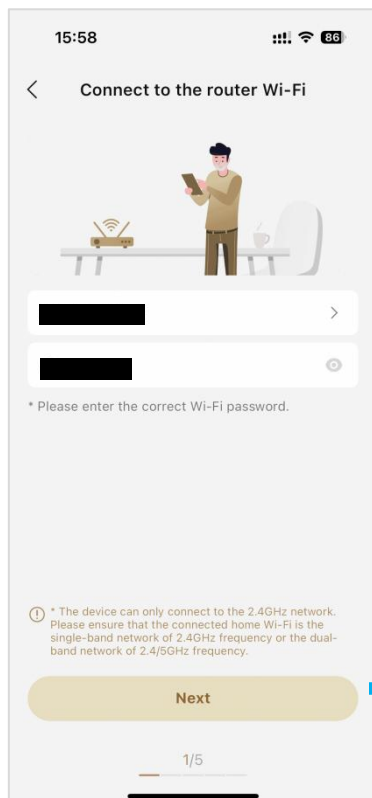


4. After logging in, add your device to the Device List



5. Follow the app guide to connect to WiFi

* Please note that the WiFi band must be 2.4G

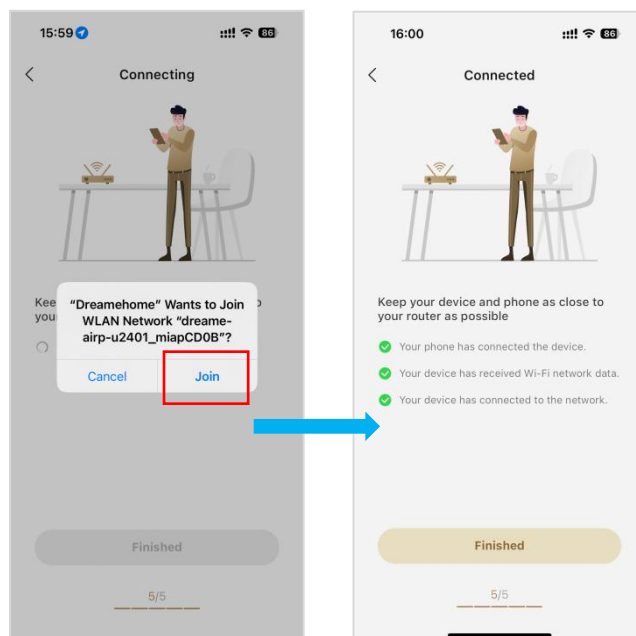


* The device can only connect to the 2.4GHz network. Please ensure that the connected home Wi-Fi is the single-band network of 2.4GHz frequency or the dual-band network of 2.4/5GHz frequency.

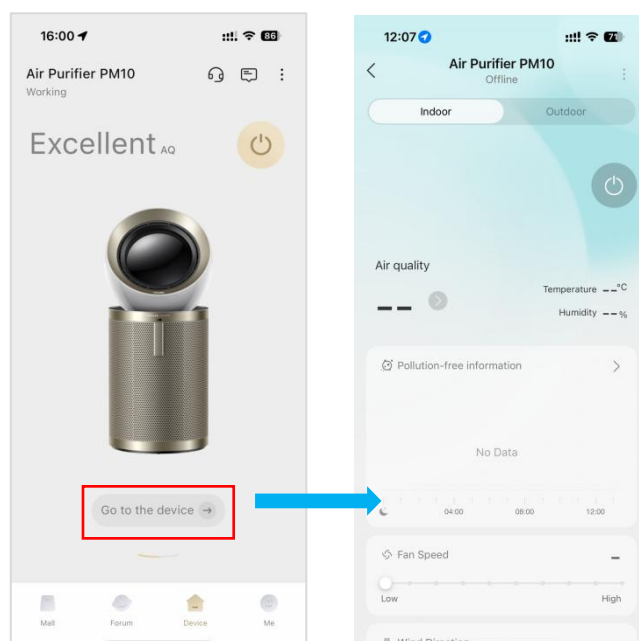
6. Hold the info button for 5 seconds until the screen shows pairing mode, then tap Next



7. Tap “Connect to Hotspot” and select “Join” in the pop-up window. Waiting for the device to be successfully distributed to the network



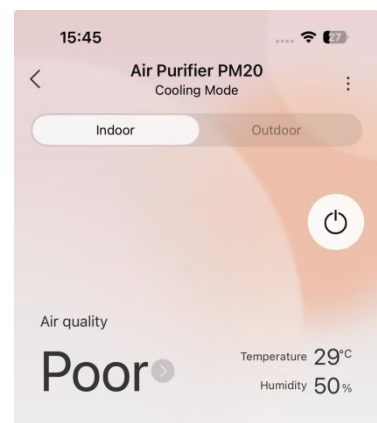
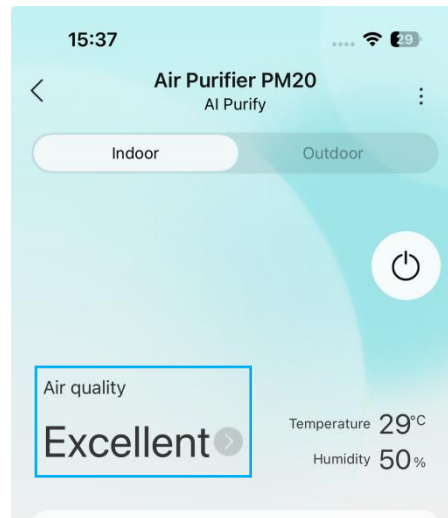
8. Go to the Device homepage for settings



II. Plug-in Operation:

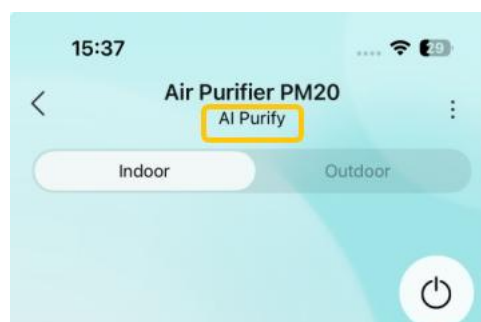
1. Interior air quality states

The background color changes with the air quality. There are 4 levels: Excellent, Good, Medium, and Poor.



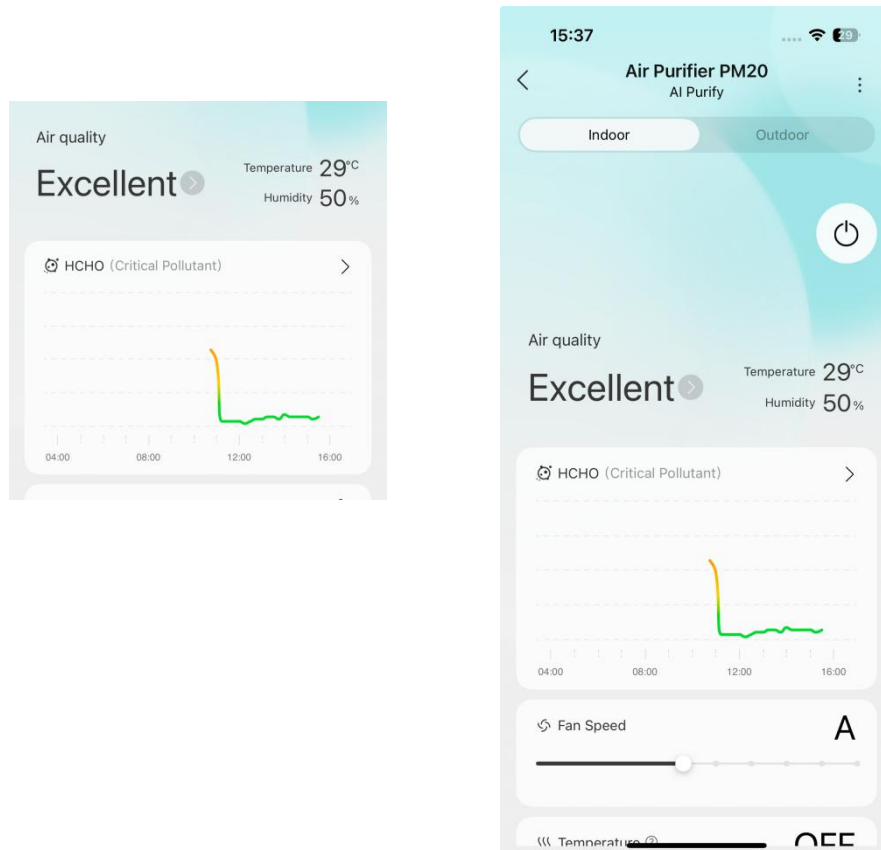
2. Working states

Intuitively display the working status of the device: Offline, Standby, Abnormal, Comfort, AI Purify, Pet Purify, Cooling mode, Heating, Working.



3. Interior and Outdoor air quality

This app interface displays outdoor and indoor data separately.



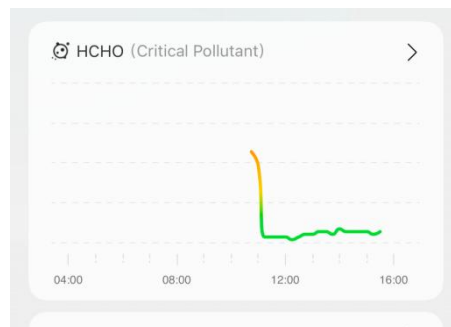
4. Outdoor air quality

Display the set city name, AQI index, and related health advice.



5. Population Chart

Use algorithms to display the highest concentration of indoor pollutants, and display 12-hour historical data. Click to display specific values for each time period.

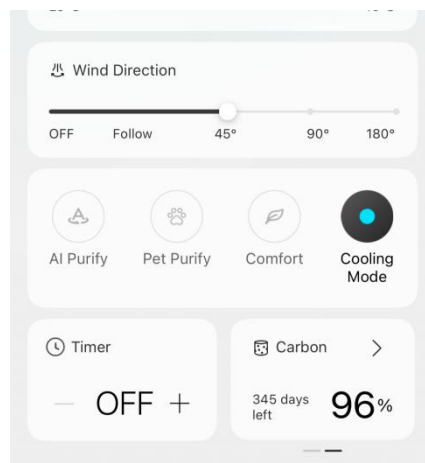


6. Widgets

Switch between modes with a single tap.

- **Auto Mode:** Smart sensing and adjustment, the wind speed will automatically adjust between 1-9 levels;
- **Comfort Mode:** Quiet and ideal for sleep, the default wind speed is 5 levels;
- **Pet Mode:** Strong purification, the default wind speed is 10 levels, suitable for pet households.

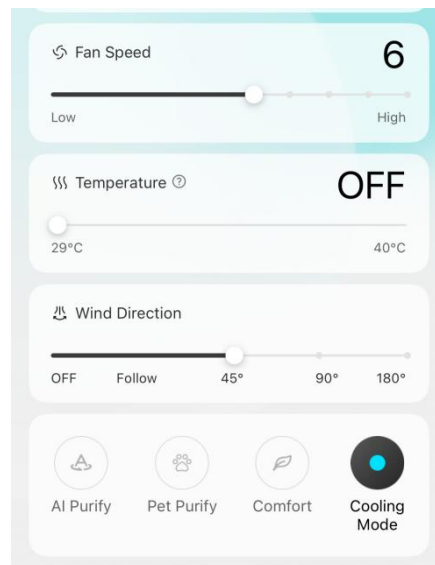
Please Note: The "Cooling Mode" turns off the heating function. It does not provide air conditioning or generate cold air.



7. adjustments

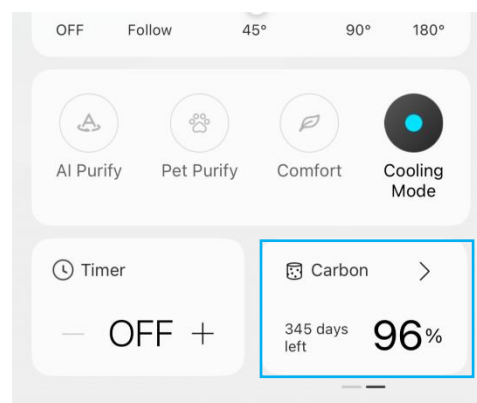
Based on normal indoor temperature, turn on heating.

Slide or drag the control to adjust the fan speed and oscillation angle as desired.



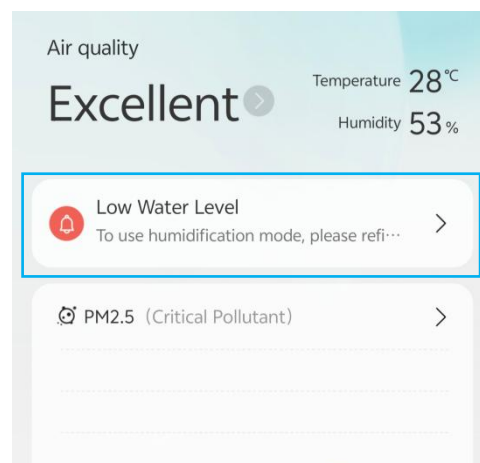
8. The life span of filters

The filter and filter element can be switched, and the life span is based on the remaining days.



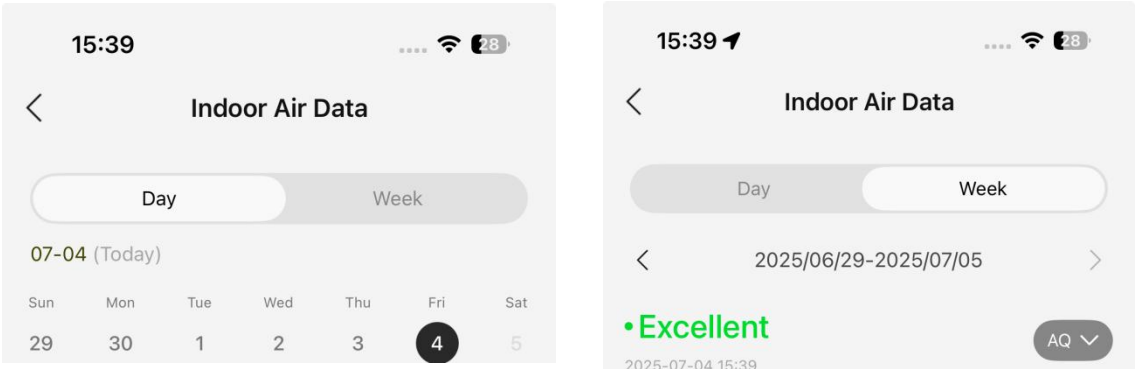
9. Info reminder

It is divided into three levels, displayed in red, yellow and green respectively.



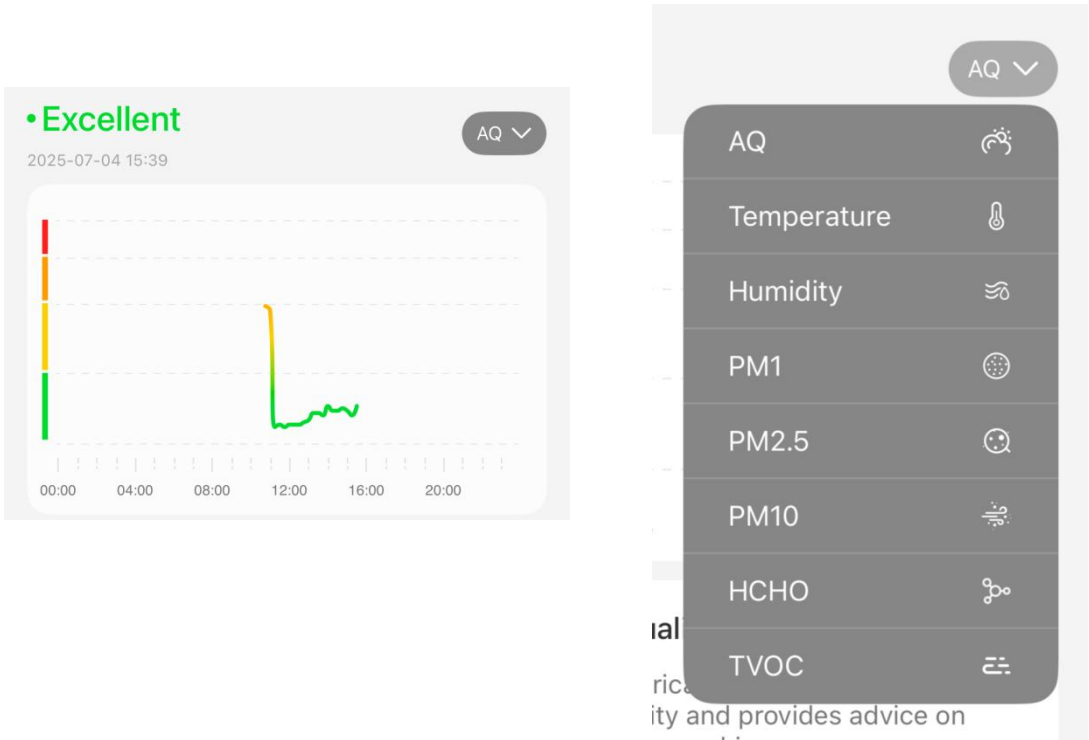
10. Added two-level pages for indoor air data: day tab page and week tab page

The day tab page can be switched by "day", and the week tab page can be switched by "week".



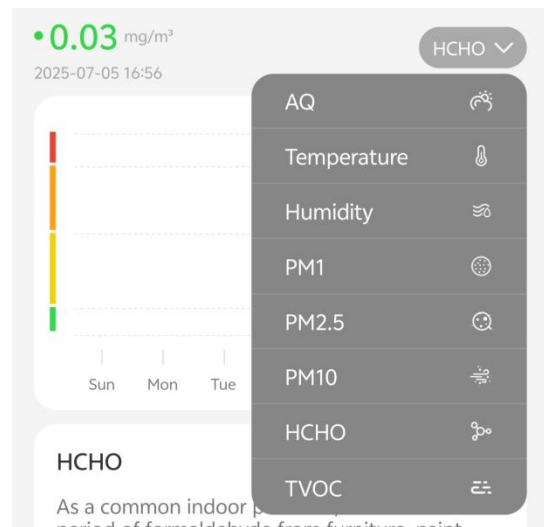
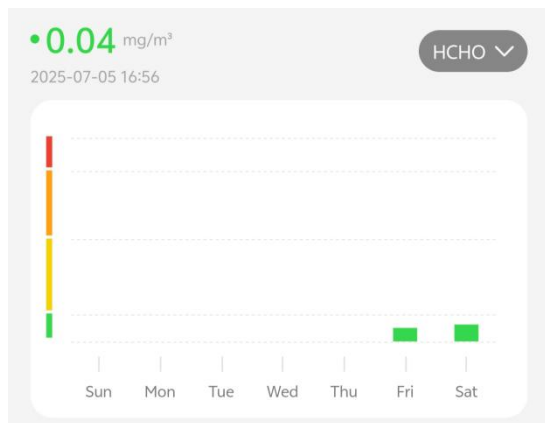
11. Added a secondary page for indoor air data - daily tab air data curve chart

The pollutant curve with the highest concentration is displayed by default. You can select and display other air data by clicking the drop-down button.



12. Added a secondary page for indoor air data - weekly tab air data curve chart

The AQ curve is displayed by default, and other air data can be filtered and displayed by clicking the drop-down button.



13. Optimize the secondary page of indoor air data - daily tab air condition

Centrally display real-time air data.

Current Air Status		
AQ	Excellent	
Temperature	29 °C	
Humidity	50 %	
PM1	9 µg/m³	
PM2.5	10 µg/m³	
PM10	14 µg/m³	
HCHO	0.04 mg/m³	
TVOC	29 µg/m³	

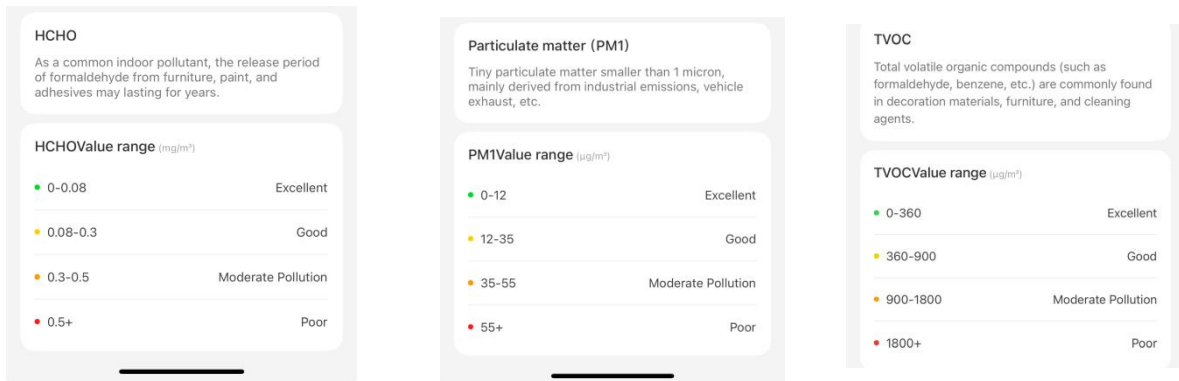
14. Added a second-level page for indoor air data - explanation of air components and levels

Contains explanations and corresponding levels of AQ, temperature, humidity, PM1, PM2.5, PM10, formaldehyde, and TVOC (if any).

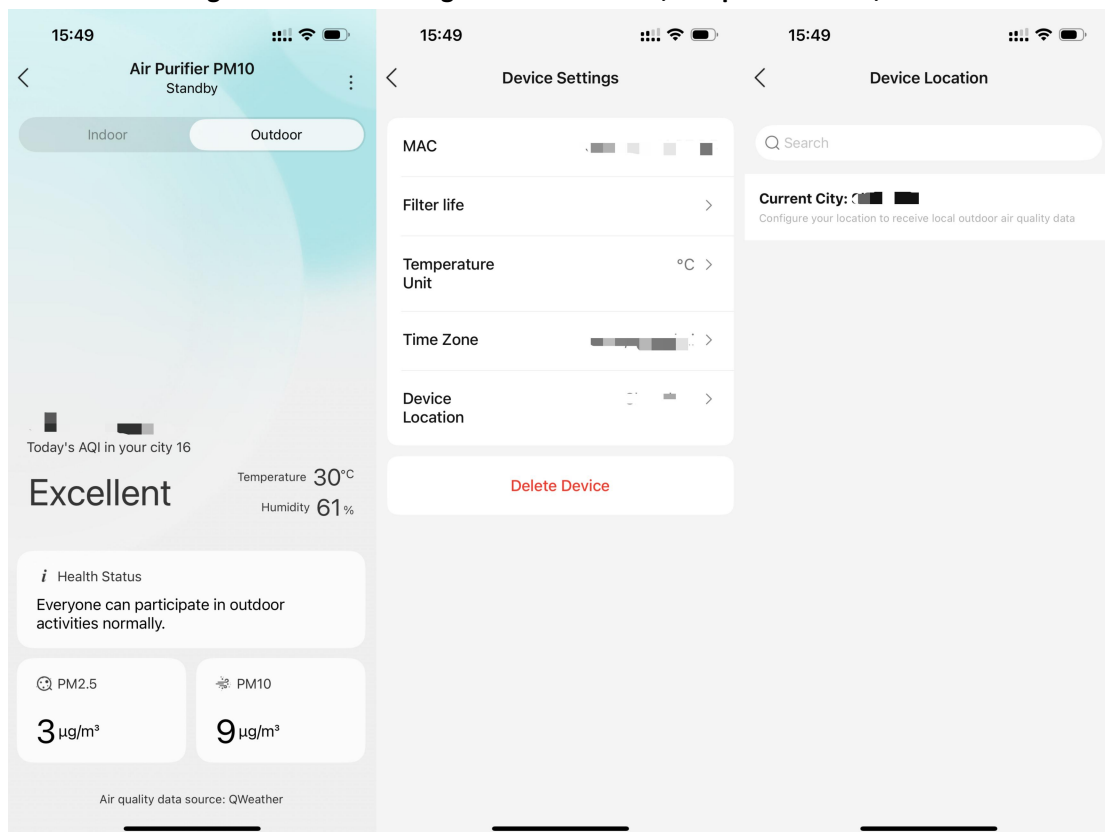
Air quality value range	
Excellent	Your device has detected very low levels of PM and TVOC.
Good	Your device has detected moderate levels of PM and TVOC. To improve air quality, activate AUTO AI or run the air purifier at low fan speed.
Moderate Pollution	Your device has detected high levels of PM and TVOC. To improve air quality, activate AUTO AI or run the air purifier at high fan speed.
Poor	Your device has detected extremely high levels of PM and TVOC. To improve air quality, activate AUTO AI or run the air purifier at high fan speed.

Particulate matter (PM10)	
Particulate matter smaller than 10 microns, including pollen and other allergens.	
PM10 Value range (µg/m³)	
0-54	Excellent
54-154	Good
154-254	Moderate Pollution
254+	Poor

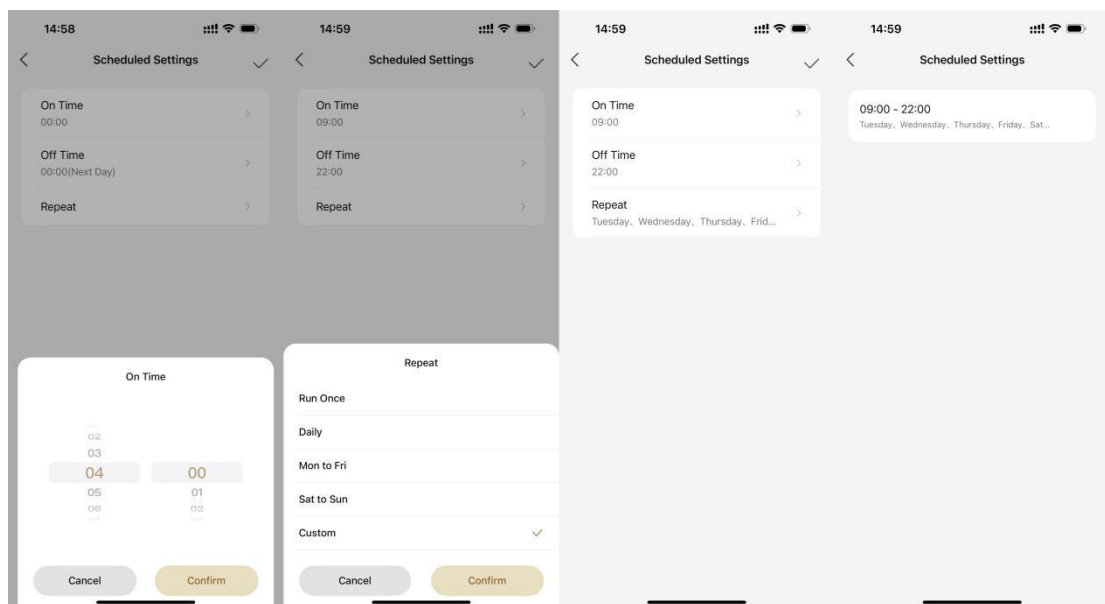
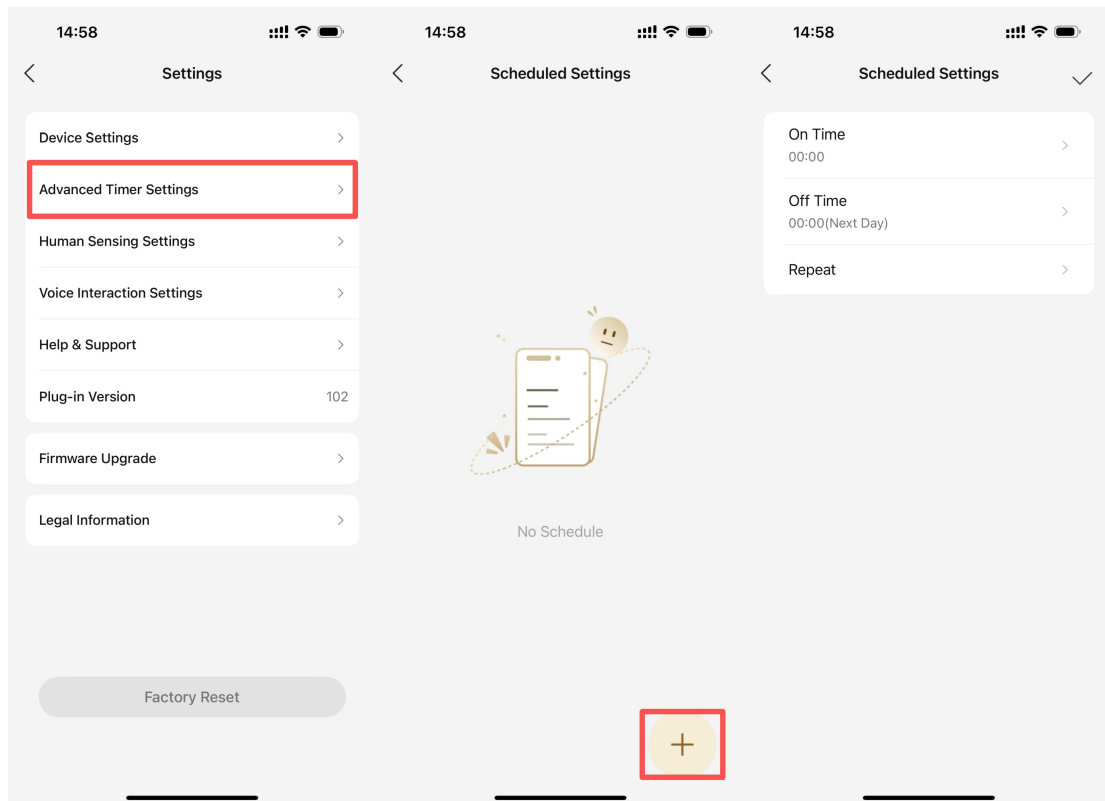
Particulate matter (PM2.5)	
Tiny particulate matter smaller than 2.5 microns, including smoke, industrial emissions, and particulate matters from candle combustion.	
PM2.5 Value range (µg/m³)	
0-12	Excellent
12-35	Good
35-55	Moderate Pollution
55+	Poor



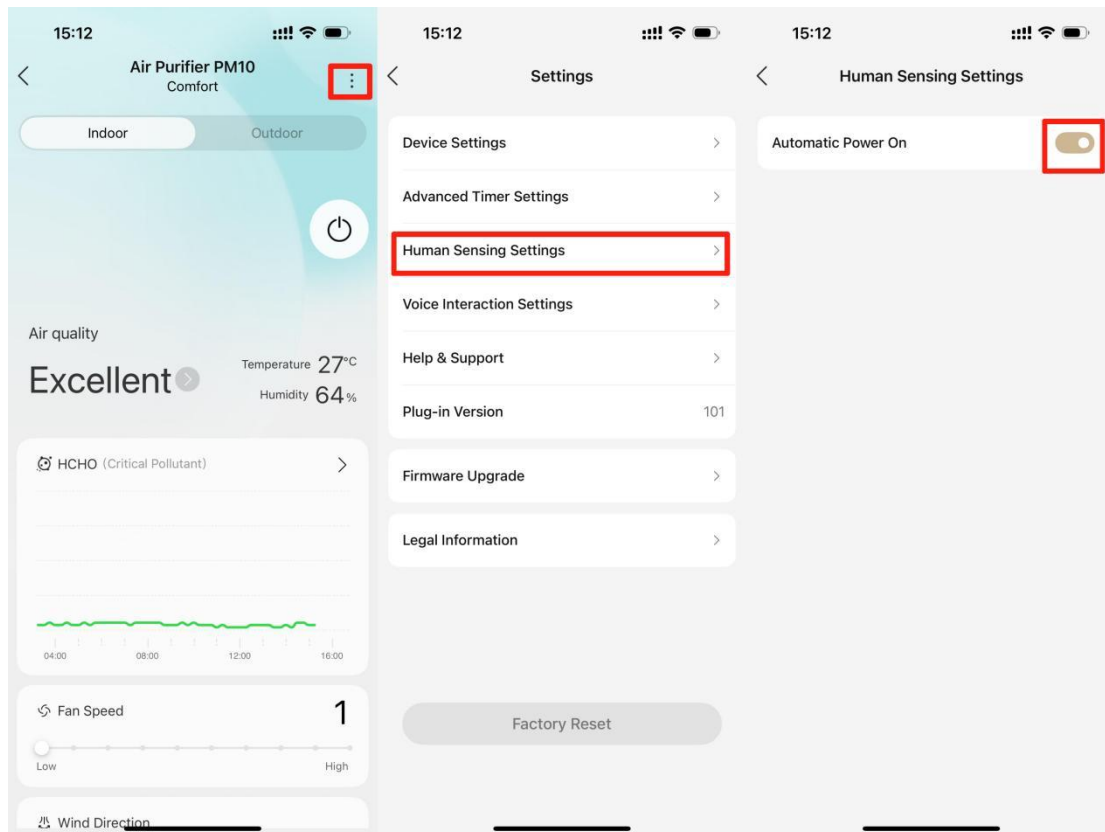
15. Device settings to set basic settings about time zone, temperature unit, device location etc.



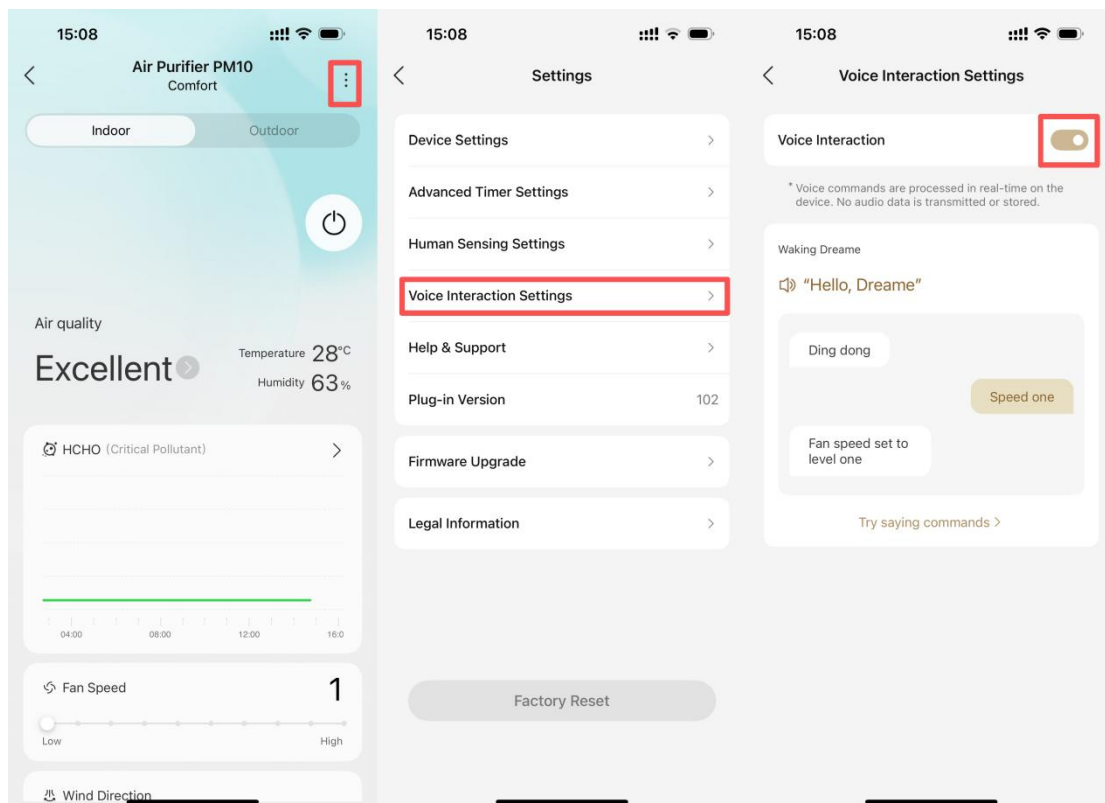
16. Advanced Timer settings to customize schedule for the air purifier.



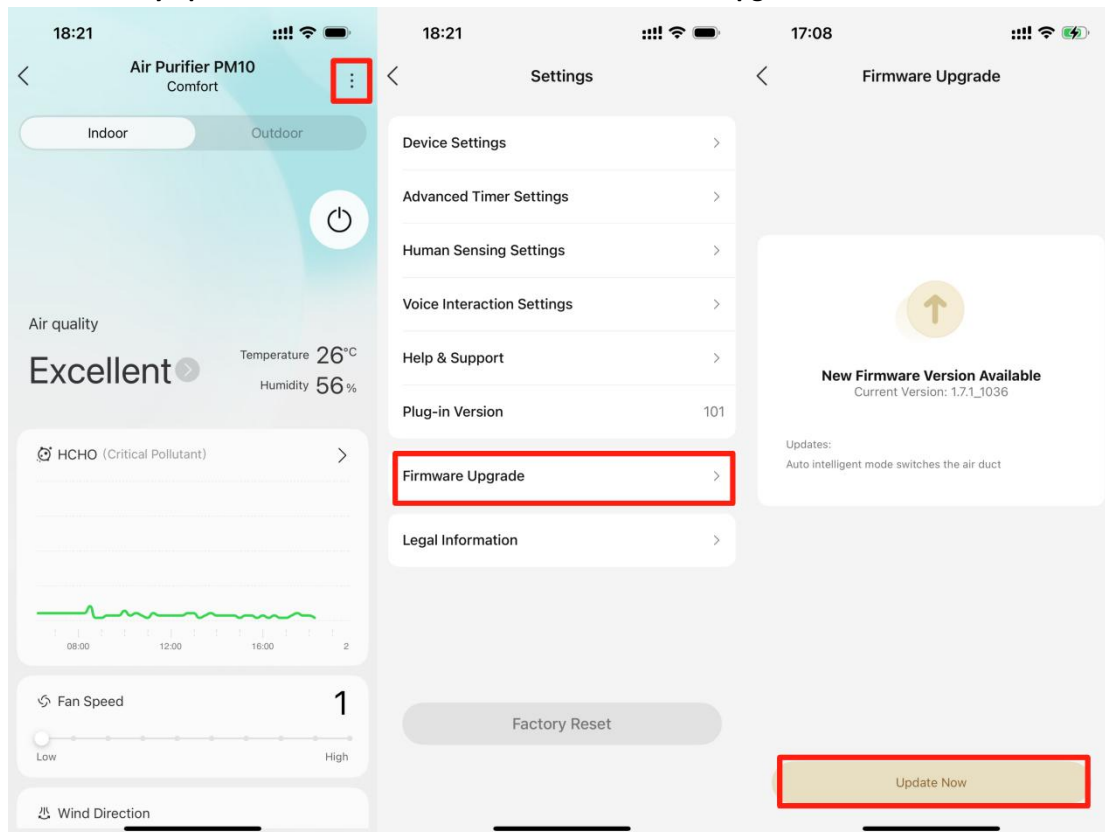
17. In Human Sensing Settings, enable the 'Automatic Power On feature' to wake the air purifier from standby mode when you are nearby.



18. Turn on 'Voice Interaction Settings' for contactless control and give commands to your purifier vocally.



19. Manually update to the latest firmware in the 'Firmware Upgrade' section.



20. How to get the account ID.

