



Scan the QR code
for the User Manual.



Escanee el código QR para
acceder al manual del usuario.



Scan the QR code
to view the FAQ.



Escanee el código QR para
ver las preguntas frecuentes.



Customer Service / Servicio al cliente

Dreame Trading (Tianjin) Co.,Ltd.
Room 2112-1-1, South District, Finance and Trade
Center, No.6975 Yazhou Road, Dongjiang Bonded
Port Area, Tianjin Pilot Free Trade Zone, Tianjin,
China

Customer Support

Call: 1 (833) 309-8234

Mon-Fri 9:00 AM – 6:00 PM EST

E-mail: support-LOCK-US@dreame.tech

Website: <https://global.dreamotech.com>

Servicio de atención al cliente

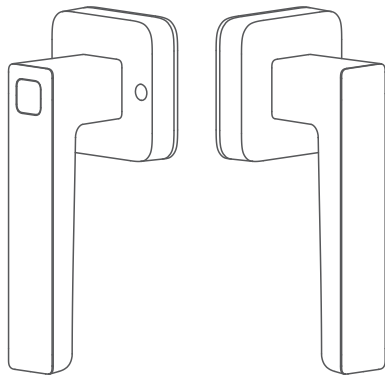
Llame al: 1 (833) 309-8234

De lunes a viernes de 9:00 AM – 6:00 PM EST

Correo electrónico: support-LOCK-US@dreame.tech

Sitio web: <https://global.dreamotech.com>

DREAME



User Manual Manual del usuario

Dreame NAVO Smart Handle
Mango inteligente Dreame NAVO

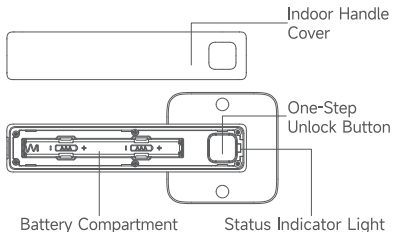
1/ Product Description

EN

The Dreame NAVO Smart Handle is a dedicated accessory for the Dreame NAVO Smart Lock, designed to enable the convenient "One-Step Unlock" feature for smoother exit. Once paired, simply push down the indoor handle while pressing its dedicated One-Step Unlock button.

This synchronizes the retraction of both the latch bolt and deadbolt, allowing you to unlock and open the door in a single, seamless motion.

Indoor Handle

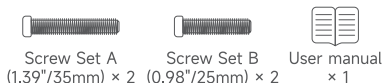
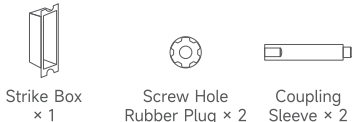
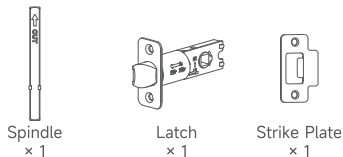
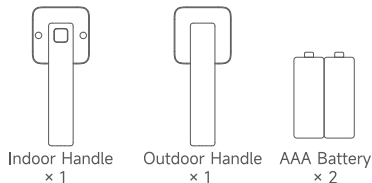


Outdoor Handle



-01-

2/ Package Contents



-02-



Phillips Pan-Head
Screws
(0.28"/7mm) × 2



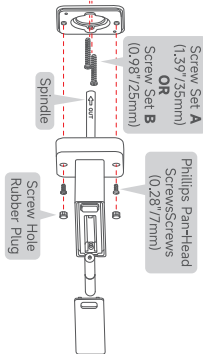
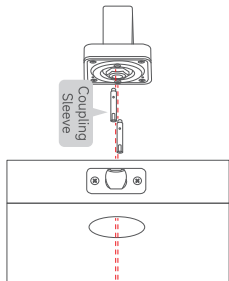
Strike Plate and
Dreadbolt Screws
(0.98"/25mm) × 4



Installation Template
× 1

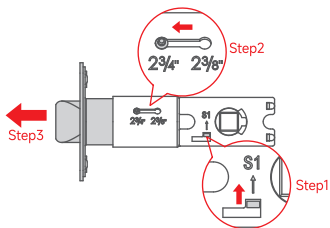
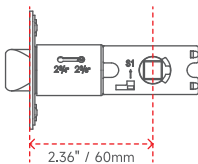
3/Installing the Handle

Please refer to the steps shown in the video to complete the door lock installation.



Step 1. Latch Installation

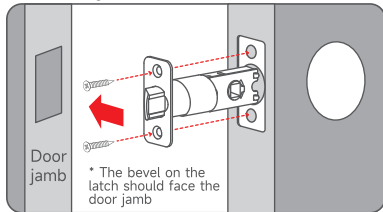
1. Check if your door latch needs adjustment. If a backset of 70mm is required: first, press the slide on the latch upward. Then, while holding the release button, pull the latch outward to extend it to 70mm.



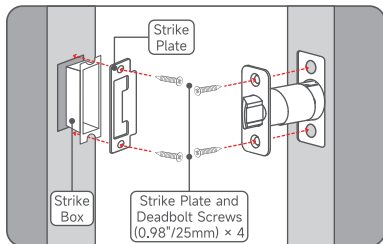
2.76" / 70mm

-05-

2. Insert and screw the latch into the door, ensuring that the beveled edge faces the door frame during installation.

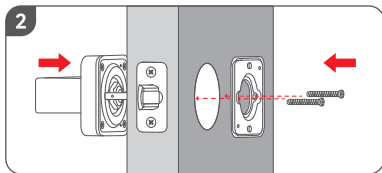
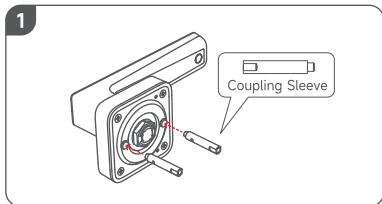


Step 2. Strike Plate Installation

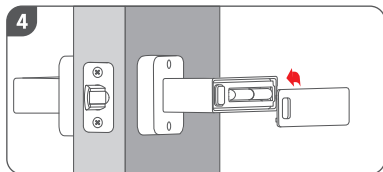
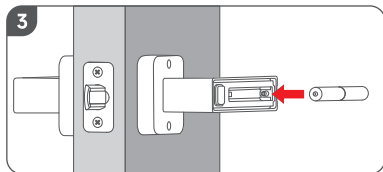
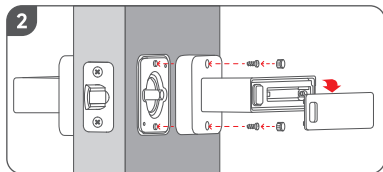
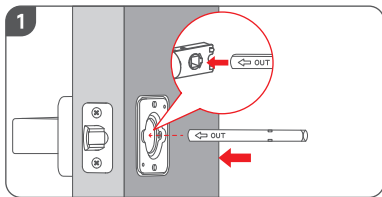


-06-

Step 3. Outdoor Handle Installation

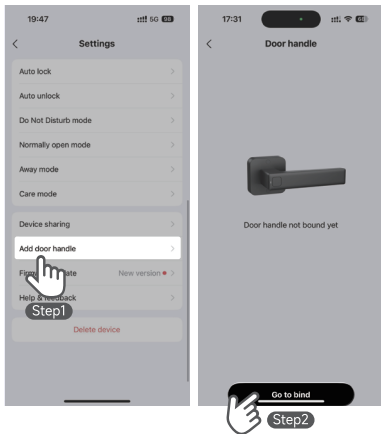


Step 4. Indoor Handle Installation



4 / Paired with the Lock

1. Please add the Dreame NAVO Smart Lock to the Dreamehome App first.
2. In the DreameHome App settings, first tap "Add Door Handle", then tap "Go to Bind". Finally, follow the on-screen instructions to pair the Dreame NAVO Smart Handle with your lock.



5 / Basic Parameters

Name: Dreame NAVO Smart Handle

Model: B811

Battery Input: 1.5V AAA Battery x 2

Operating Temperature:

Outdoor Handle: -35°C - 66°C (-31°F - 151°F)

Indoor Handle: 0°C - 49°C (32°F - 120°F)

Operating Humidity: 0 - 93% RH, No Condensation

Wireless Connection: 433MHz

Dimensions:

Outdoor Handle: 6-1/4" (158.6mm) ×

2-23/32" (69mm) × 2-9/16" (65mm)

Indoor Handle: 6-1/4" (158.6mm) ×

2-47/64" (69.5mm) × 2-9/16" (65mm)

Installation Requirements:

Hole Diameter: 2-1/8" (54mm)

Door Thickness: 1-3/8" (35mm) - 2-9/32" (58mm)

Door Backset: 2-3/8" or 2-3/4" (60 or 70mm)

IC: 26444-B811

FCC ID: 2AXGD-B811

CAN ICES (B)/ NMB (B)

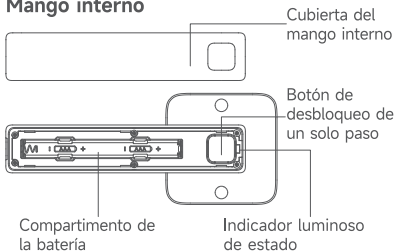
1/ Descripción del producto

ES

El mango inteligente Dreame NAVO es un accesorio específico para la cerradura inteligente Dreame NAVO, diseñado para habilitar la cómoda función «One-Step Unlock» (desbloqueo en un solo paso) y facilitar la salida. Una vez que se haya emparejado, simplemente presione el mango interior mientras presiona su botón específico de desbloqueo en un solo paso.

Esto sincroniza la retracción tanto del pasador de cierre como del cierre de seguridad, lo que le permite desbloquear y abrir la puerta con un solo movimiento ininterrumpido.

Mango interno



Mango externo



-11-

2/ Contenido del embalaje



Mango interno
× 1



Mango externo
× 1



Batería AAA
× 2



Eje
× 1



Pasador
× 1



Placa de
contacto × 1



Caja de
contacto × 1



Tapón de goma
para el orificio
del tornillo × 2



Expansor
× 2



Juego de
tornillos A
(1.39"/35mm) × 2



Juego de
tornillos B
(0.98"/25mm) × 2



Manual del
usuario × 1

-12-



Tornillos Phillips
de cabeza plana
(0.28"/7 mm) × 2



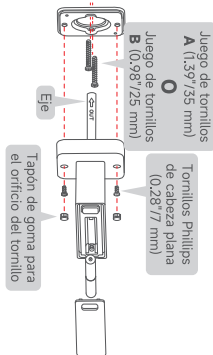
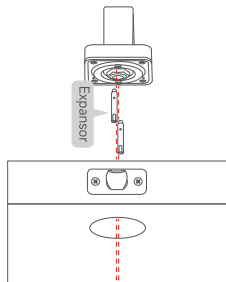
Placa de contacto y
tornillos para instalar
el cerrojo
(0.98"/25 mm) × 4



Plantilla para la
instalación × 1

3/ Instalación del mango

Consulte los pasos que se muestran en el video para completar la instalación de la cerradura de la puerta.

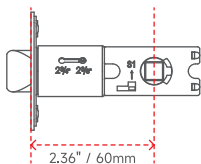


Juego de tornillos
A (1.39"/35 mm)
B (0.98"/25 mm)

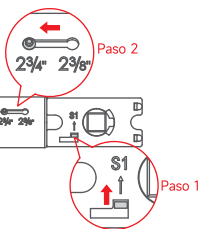
Tornillos Phillips
de cabeza plana
(0.28"/7 mm)

Paso 1 Instalación del pasador

1. Compruebe si el pasador de la puerta necesita algún ajuste. Si se necesita una distancia del eje al borde de 70 mm: primero, presione hacia arriba la guía del pasador. A continuación, mientras mantiene pulsado el botón de liberación, hable el pasador hacia fuera para extenderlo hasta 70 mm.

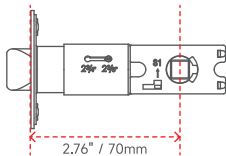


2.36" / 60mm



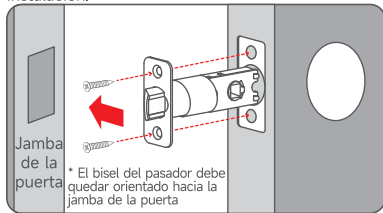
Paso 2

Paso 1



2.76" / 70mm

2. Inserte y atornille el pasador en la puerta, asegurándose de que el borde biselado quede orientado hacia el marco de la puerta durante la instalación.



Jamba de la puerta

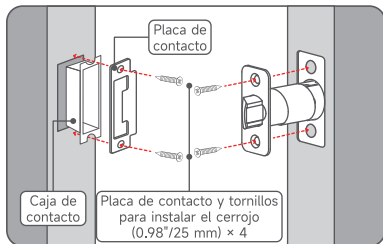
* El bisel del pasador debe quedar orientado hacia la jamba de la puerta



Pasador

Placa de contacto y tornillos para instalar el cerrojo (0.98"/25 mm) x 2

Paso 2 Instalación de la placa de contacto

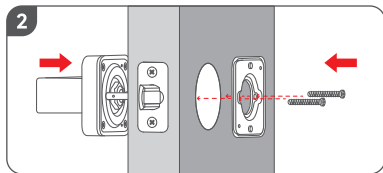
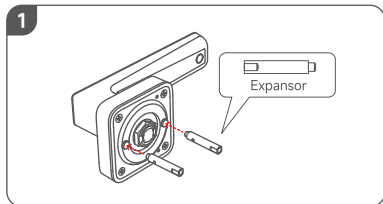


Caja de contacto

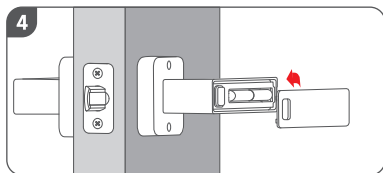
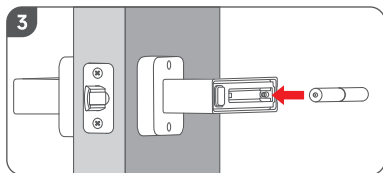
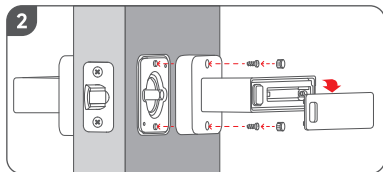
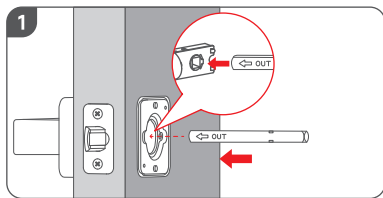
Placa de contacto

Placa de contacto y tornillos para instalar el cerrojo (0.98"/25 mm) x 4

Paso 3 Instalación del mango externo



Paso 4 Instalación del mango interno



4 / Emparejamiento con la cerradura

1. Añada primeramente la cerradura inteligente Dreame NAVO a la aplicación Dreamehome.
2. En la configuración de la aplicación DreameHome, primeramente pulse «Añadir mango de puerta» y, a continuación, pulse «Ir a vincular». Por último, siga las instrucciones que aparecen en pantalla para emparejar el mango inteligente Dreame NAVO con su cerradura.



5 / Parámetros básicos

- Nombre: Mango inteligente Dreame NAVO
Modelo: B811
Entrada de la batería: 1.5 V Batería AAA x 2
Temperatura de funcionamiento:
Mango externo: -35 °C - 66 °C (-31 °F - 151 °F)
Mango interno: 0 °C - 49 °C (32 °F - 120 °F)
Humedad de funcionamiento: 0 - 93 % HR,
Sin condensación
Conexión inalámbrica: 433 MHz
Dimensiones:
Mango externo: 6-1/4" (158.6 mm) ×
2-23/32" (69 mm) × 2-9/16" (65 mm)
Mango interno: 6-1/4" (158.6 mm) ×
2-47/64" (69.5mm) × 2-9/16" (65 mm)
Requisitos de instalación:
Diámetro del orificio: 2-1/8" (54 mm)
Grosor de la puerta:
1-3/8" (35 mm) - 2-9/32" (58 mm)
Distancia del eje al borde:
2-3/8" o 2-3/4" (60 o 70 mm)
IC: 26444-B811
FCC ID: 2AXGD-B811
CAN ICES (B)/ NMB (B)

Safety Instructions

Warning:

- replacement of a battery with an incorrect type that can defeat a safeguard;
- disposal of a battery into fire or a hot oven, or mechanically crushing or cutting of a battery, that can result in an explosion;
- leaving a battery in an extremely high temperature surrounding environment that can result in an explosion or the leakage of flammable liquid or gas; and
- a battery subjected to extremely low air pressure that may result in an explosion or the leakage of flammable liquid or gas.

Attention:

- remplacement d'une batterie par un type incorrect pouvant supprimer une protection
- mise au rebut d'une batterie dans un feu ou dans un four chaud, ou écrasement mécanique ou coupure d'une batterie, susceptible de provoquer une explosion;
- maintien d'une batterie dans un environnement à très haute température pouvant provoquer une explosion ou la fuite de liquide ou de gaz inflammables; et
- batterie soumise à une pression de l'air extrêmement faible pouvant provoquer une explosion ou la fuite de liquide ou de gaz inflammables.



CAUTION RISK OF EXPLOSION IF BATTERY IS REPLACED BY AN INCORRECT TYPE.
DISPOSE OF USED BATTERIES ACCORDING TO THE INSTRUCTIONS



ATTENTION RISQUE D'EXPLOSION SI LA BATTERIE EST REMPLACÉE PAR UN TYPE INCORRECT. ÉLIMINER LES BATTERIES USÉES SELON LES INSTRUCTIONS

This equipment is not suitable for use in locations where children are likely to be present. This equipment is not intended for use by children.

Do not use the product in any way other than described herein in order to avoid personal injury or property damage.

User should comply with the laws and regulations of the corresponding countries and regions where the equipment is located (used), abide by professional ethics, pay attention to safety obligations, and strictly prohibit the use of our products or equipment for any illegal purposes. Our company will not be responsible for any violators' legal liability under any circumstances.

Notice (United States Of America) FCC Statement

This device complies with Part 15 of the FCC Rules. Operation is subject to the following two conditions: (1) this device may not cause harmful interference, and (2) this device must accept any interference received, including interference that may cause undesired operation.

Warning: Changes or modifications not expressly approved by the party responsible for compliance could void the user's authority to operate the equipment.

Note: This equipment has been tested and found to comply with the limits for a Class B digital device, pursuant to Part 15 of the FCC Rules. These limits are designed to provide reasonable protection against harmful interference in a residential installation.

This equipment generates uses and can radiate radio frequency energy and, if not installed and used in accordance with the instructions, may cause harmful interference to radio communications. However, there is no guarantee that interference will not occur in a particular installation. If this equipment does cause harmful interference to radio or television reception, which can be determined by turning the equipment off and on, the user is encouraged to try to correct the interference by one or more of the following measures: (1) Reorient or relocate the receiving antenna. (2) Increase the separation between the equipment and receiver. (3) Connect the equipment into an outlet on a circuit different from that to which the receiver is connected. (4) Consult the dealer or an experienced radio/TV technician for help.

FCC Radio Frequency Exposure Statement
The device has been evaluated to meet general RF exposure requirements. The device can be used in fixed/mobile exposure condition. The min separation distance is 20cm.

Notice: Shielded cables
All connections to other computing devices must be made using shielded cables to maintain compliance with FCC regulations.

The following importer is the responsible party
Company Name: ANTEK SERVICE INC
Address: 901 N PENNSYLVANIA ST STE O

DENVER, CO 80203 Unite States
Telephone: +01303-8006306

Notice (Canada)

This device complies with Industry Canada licence-exempt RSS standard(s). Operation is subject to the following two conditions:
(1) this device may not cause interference, and
(2) this device must accept any interference, including interference that may cause undesired operation of the device.

Le présent appareil est conforme aux CNR d'Industrie Canada applicables aux appareils radio exempts de licence. L'exploitation est autorisée aux deux conditions suivantes:

(1) l'appareil n' doit pas produire de brouillage, et
(2) l'utilisateur de l'appareil doit accepter tout brouillage radioélectrique subi, même si le brouillage est susceptible d'en compromettre le fonctionnement.

This Class B digital apparatus complies with Canadian ICES-003.

Cet appareil numérique de la classe B est conforme à la norme NMB-003 du Canada.

IC RF Statement:

When using the product, maintain a distance of 20cm from the body to ensure compliance with RF exposure requirements.

Lors de l'utilisation du produit, maintenez une distance de 20 cm du corps afin de vous conformer aux exigences en matière d'exposition RF.

NOTICE (Australia)

Do not use the Device in the environment at too high or too low temperature, never expose the Device under strong sunshine or too wet environment. The suitable temperature for the device and accessories is 0°C to 35°C (Charging temperature is 0°C to 45°C).

It is recommended to supply the device in an environment with a temperature that ranges from 5°C~25°C.

When supplying, please place the device in an environment that has a normal room temperature and good ventilation.

Our goods come with guarantees that cannot be excluded under the Australian Consumer Law. You are entitled to a replacement or refund for a major failure and compensation for any other reasonably foreseeable loss or damage. You are also entitled to have the goods repaired or replaced if the goods fail to be of acceptable quality and the failure does not amount to a major failure.



Your product is designed and manufactured with high quality materials and components, which can be recycled and reused.



This symbol means the product must not be discarded as household waste, and should be delivered to an appropriate collection facility for recycling. Proper disposal and recycling helps protect natural resources, human health and the environment. For more information on disposal and recycling of this product, contact your local municipality, disposal service, or the shop where you bought this product.