



Scan the QR code for the User Manual.  
Escanee el código QR para acceder al manual del usuario.



Scan the QR code to view the FAQ.  
Escanee el código QR para ver las preguntas frecuentes.



### Customer Service / Servicio al cliente

Dreame Trading (Tianjin) Co.,Ltd.  
Room 2112-1-1, South District, Finance and Trade Center, No.6975 Yazhou Road,  
Dongjiang Bonded Port Area, Tianjin Pilot Free Trade Zone, Tianjin, China

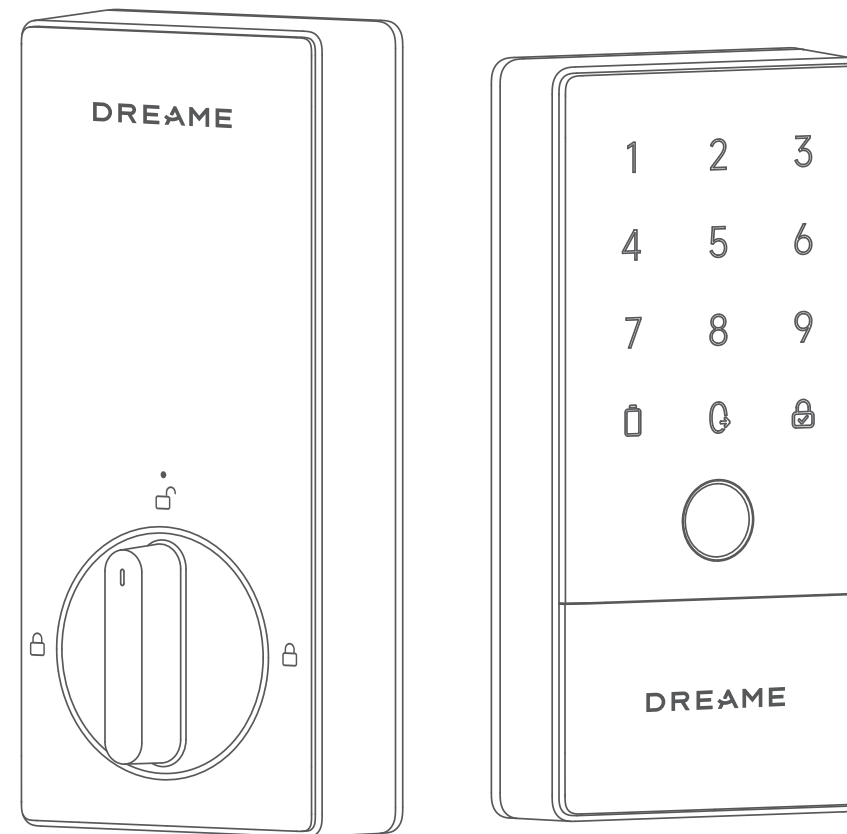
#### Customer Support

Call: 1 (833) 309-8234  
Mon-Fri 9:00 AM – 6:00 PM EST  
E-mail: support-LOCK-US@dreame.tech  
Website: <https://global.dreametech.com>

#### Servicio de atención al cliente

Llame al: 1 (833) 309-8234  
De lunes a viernes de 9:00 AM – 6:00 PM EST  
Correo electrónico: support-LOCK-US@dreame.tech  
Sitio web: <https://global.dreametech.com>

# DREAME



## User Manual Manual del usuario

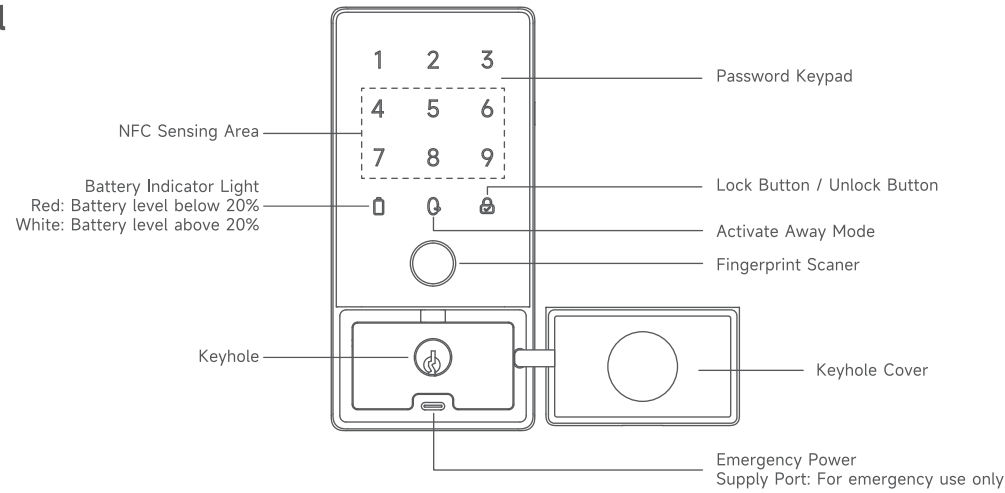
Dreame NAVO Smart Lock A10  
Cerradura inteligente Dreame NAVO A10

# 1 / Product Description

EN

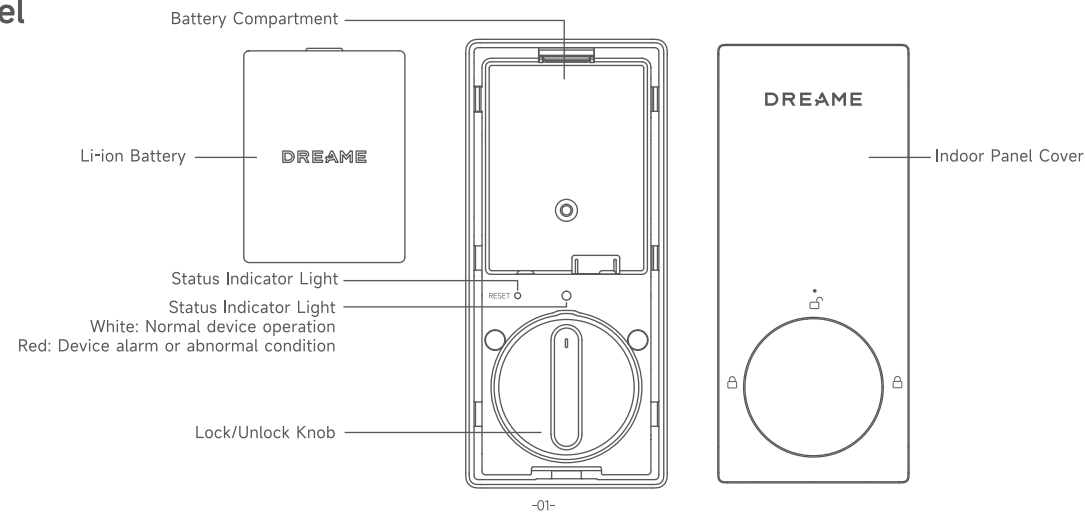
The Dreame NAVO Smart Lock A10 offers BHMA Grade 2 security, a sleek design, a long-lasting battery, real-time alerts, and access logs. It is fully compatible with Matter over Thread for seamless integration into your smart home.

## Outdoor Panel

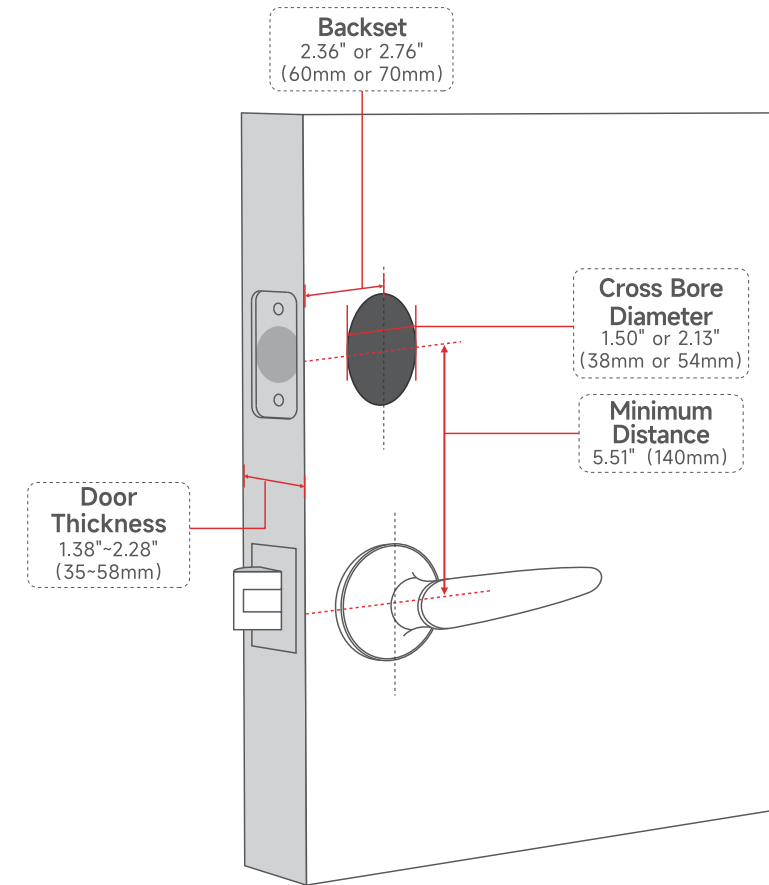


Note: The "Emergency Power Supply Port" is not for battery charging purpose and can only be used for emergency power supply to the lock.

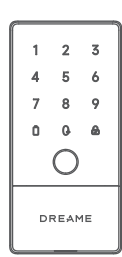
## Indoor Panel



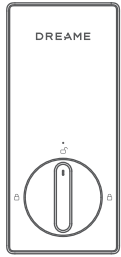
# 2 / Prepare the Door and Check Dimensions



### 3 / Package Contents



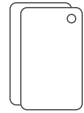
Outdoor Panel  
× 1



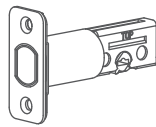
Indoor Panel  
× 1



Li-ion Battery  
× 1



NFC keycard  
× 2



Deadbolt  
× 1



Strike Plate  
× 1



Strike Box  
× 1



Keys  
× 2



Strike Plate and  
Deadbolt Screws  
(0.98"/25mm) × 4



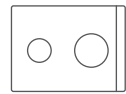
Screw Hole  
Rubber Plug × 2



Coupling Sleeve  
× 1



User manual  
× 1



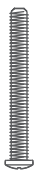
Installation  
Template × 1



Screw Set A  
(2.56"/65mm)  
× 2



Screw Set B  
(2.17"/55mm) × 2



Screw Set C  
(1.77"/45mm) × 1



Screw Set D  
(1.39"/35mm) × 1



Screw Set E  
(0.70"/18mm) × 2

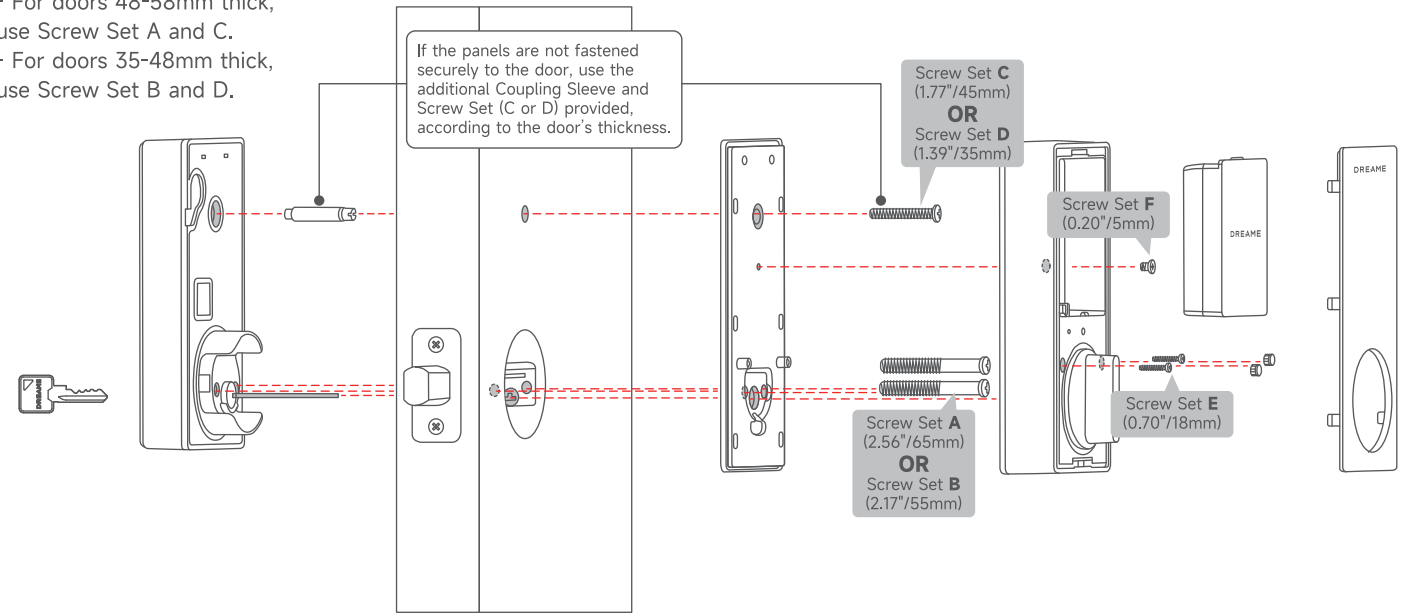


Screw Set F  
(0.20"/5mm) × 1

### 4 / Installing the Lock

**Note:**

- For doors 48-58mm thick, use Screw Set A and C.
- For doors 35-48mm thick, use Screw Set B and D.



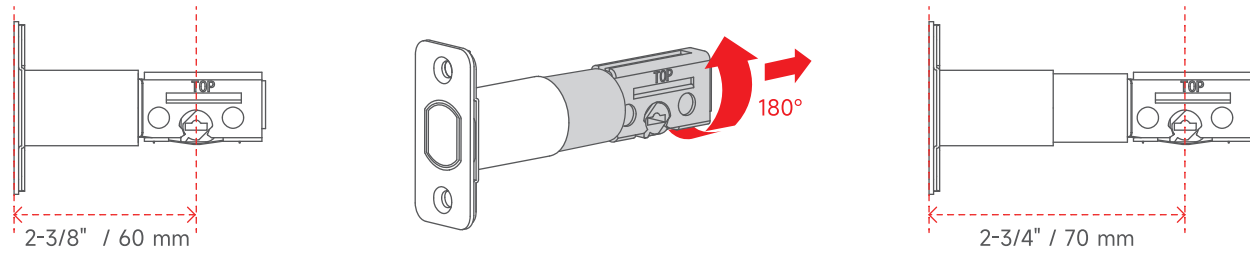
Please refer to the steps shown in the video to complete the door lock installation.



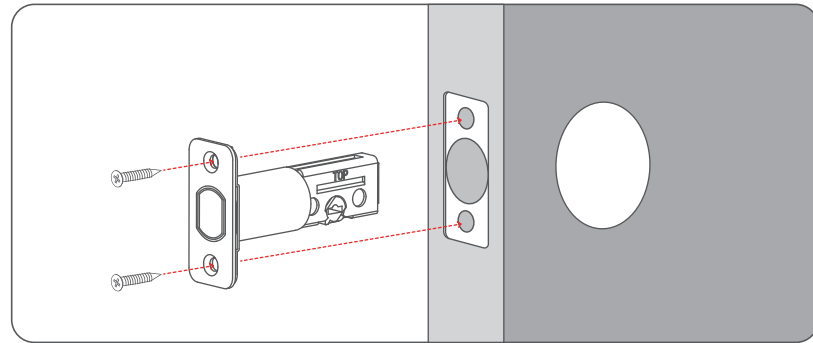
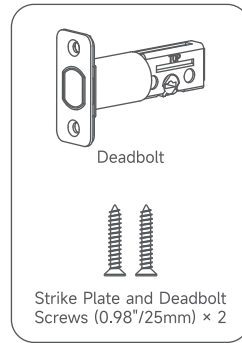
After the smart lock is installed, it is recommended to keep the mechanical key in a secure outdoor location for emergency use.

## Step 1. Deadbolt Installation

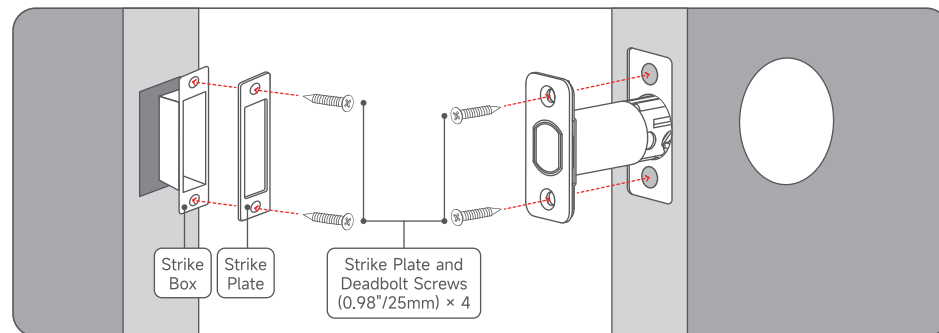
1. Check your door to see if the deadbolt requires adjustment. If the backset is 70mm, turn the faceplate 180° to extend the length.



2. Insert and screw the deadbolt into the doorframe. Make sure the word "TOP" on the deadbolt faces up.

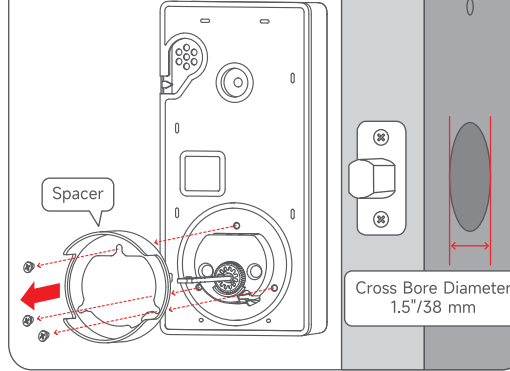


## Step 2. Strike Plate Installation

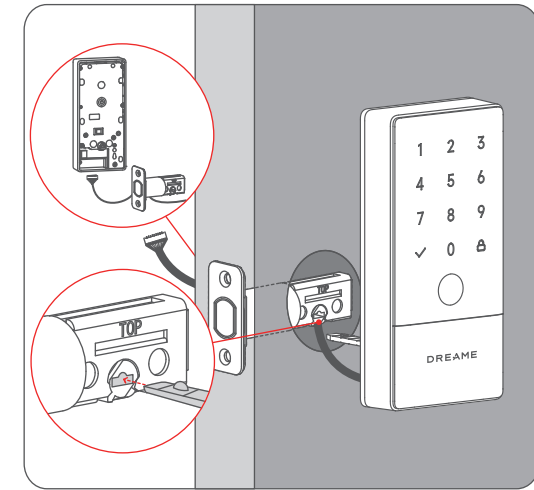
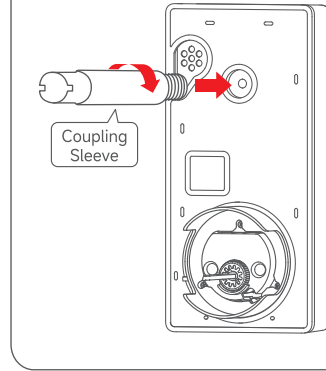


## Step 3. Outdoor Panel Installation

If you have a 38mm cross bore, disassemble the spacer before installation.  
For 38mm cross bore only



If the panels are not fastened securely to the door, use the additional Coupling Sleeve.

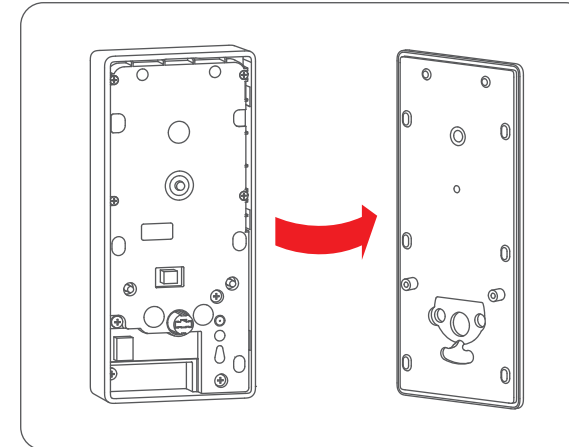


### NOTE:

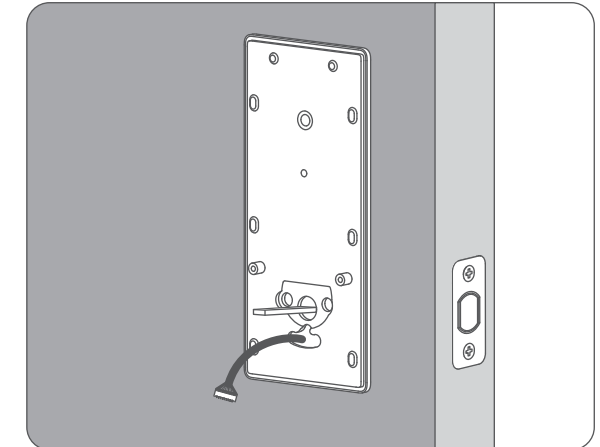
Please ensure that the latch bolt is in the retracted position before proceeding with the installation. Also, DO NOT leave the key inserted in the lock during installation.

## Step 4. Indoor Panel Installation

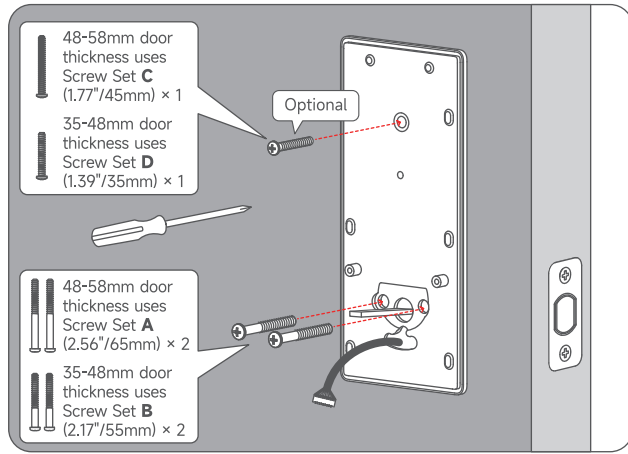
1. Detach the mounting bracket from the Indoor Panel.



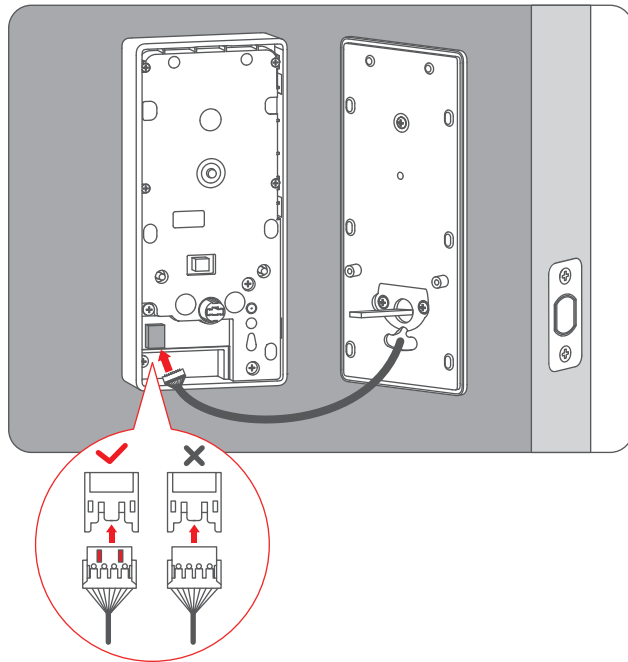
2. Run the wires through the mounting bracket.



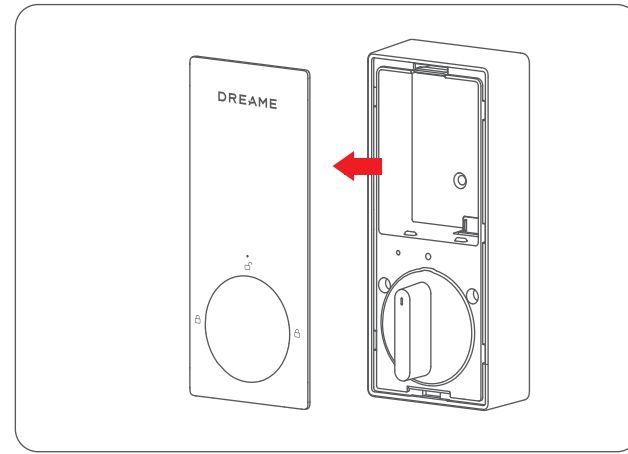
3. Secure the mounting bracket with screws.



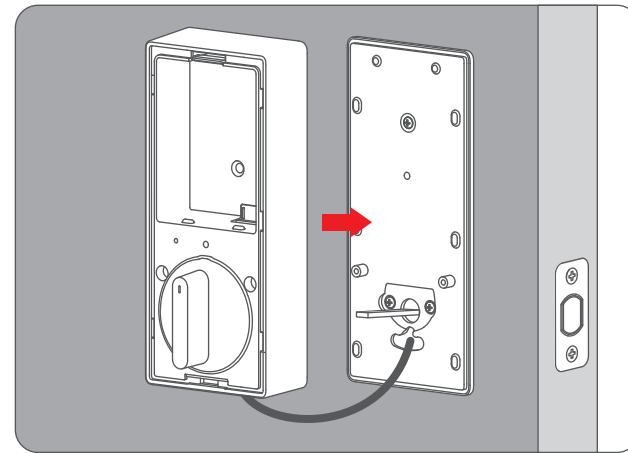
5. Wire to the Indoor Panel.



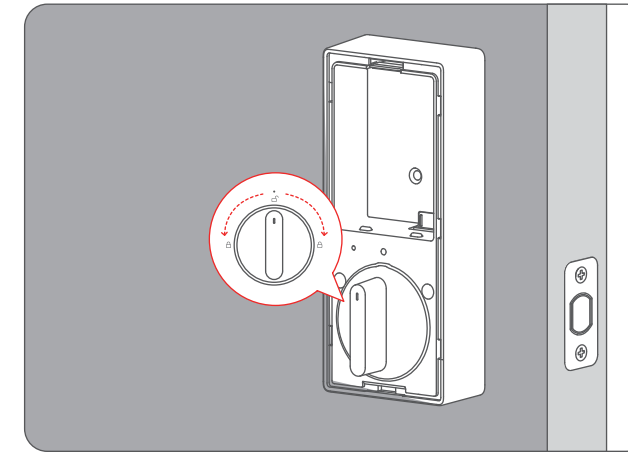
4. Remove the Indoor Panel Cover.



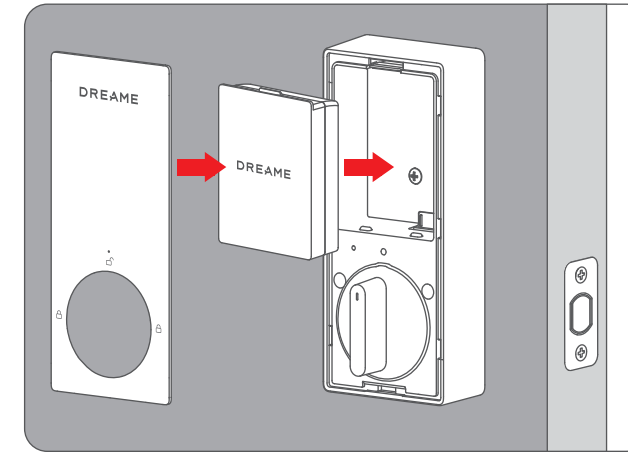
6. Mount the Indoor Panel. Make sure both wires are tucked into the cabin on the back of the Indoor Panel.



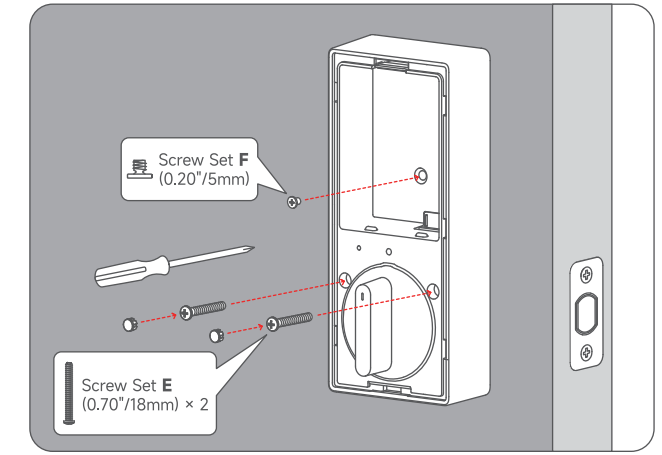
7. Check if the deadbolt retracts by turning the thumbturn.



9. Insert the Li-ion battery as shown in the illustration.



8. Secure the Indoor Panel with screws and then install the Screw Hole Rubber Plugs.



## 5 / Connect to Dreamehome

### Download and install the Dreamehome App

Please download and install the Dreamehome App from the Apple App Store, Google Play, or by scanning the provided QR code.



#### Add device

Pairing via Automatic Discovery:

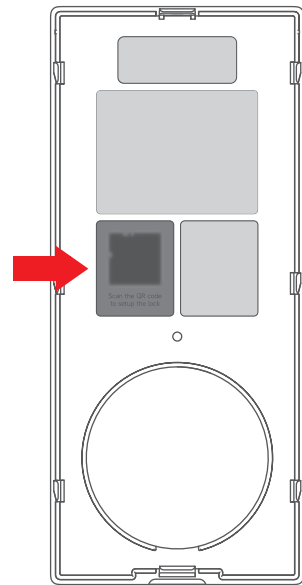
- Power on the lock.
- Bring your phone near the lock, then open the Dreamehome App. The app will automatically scan for and display nearby devices.
- When your lock ("Dreame NAVO Smart Lock A10") appears in the list, select it.
- Follow the in-app instructions to complete the pairing and setup.

Pairing via Manual Add:

- Power on the lock.
- Open the Dreamehome App and tap the "+" icon (or "Add Device") on the main screen.
- To add your lock, choose one of the following methods:
  - Scan QR Code: Tap "Scan QR Code" and point your phone's camera at the QR code on the Indoor Panel cover.
  - Select Manually: Browse or search the device list and select "Dreame NAVO Smart Lock A10".
- Follow the on-screen instructions to complete the pairing and setup.

#### Note:

- For the most reliable setup, keep your phone close to the device during pairing to ensure it stays within Bluetooth range.
- As the Dreamehome App is regularly updated, the interface and steps may change. Please follow the in-app instructions for the most current guide.

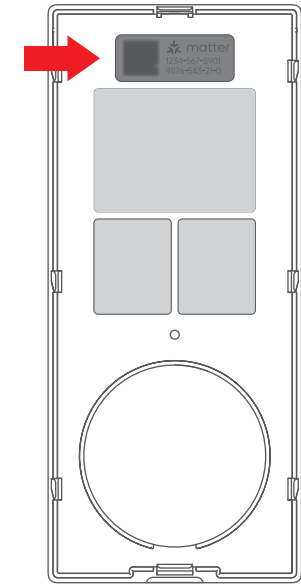


## 6 / Connect to Matter Ecosystems

- For initial Matter binding, ensure you have a 2-in-1 Matter Controller and Thread Border Router. Power on the lock, then use your third-party ecosystem's app to scan the Matter QR code on the Indoor Panel cover or enter its setup code.
- After the lock is bound to a Matter ecosystem, you can use the Matter controller app to share it with other compatible platforms.
- To bind the lock to a new ecosystem, you can use the Matter controller app to delete the lock from your current controller app, then perform a factory reset on the door lock. This will return the lock to its initial pairing state.

#### Note:

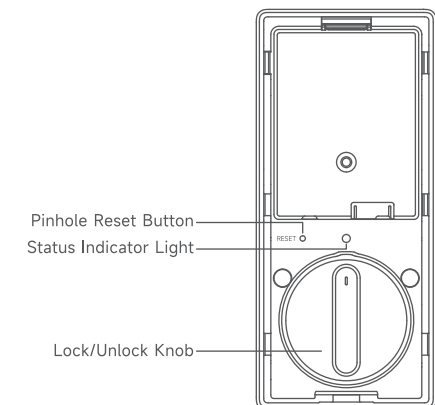
In the early stages of the Matter ecosystem, different platforms support varying features. For example, some platforms do not support adding door lock passwords. For a better user experience, we recommend adding the device in the Dreamehome App.



## 7 / Lock Settings and Operations

### Indoor Panel Settings and Operations

Buttons	Operations	Functions
Reset Button	Click	Activate pairing mode to pair with the Dreamehome App or other Matter ecosystems.
	Press and hold 3 seconds	Initiate the reset process.
Lock/Unlock Knob	Turn the knob	Move the bolt in or out until the lock is fully locked or unlocked.

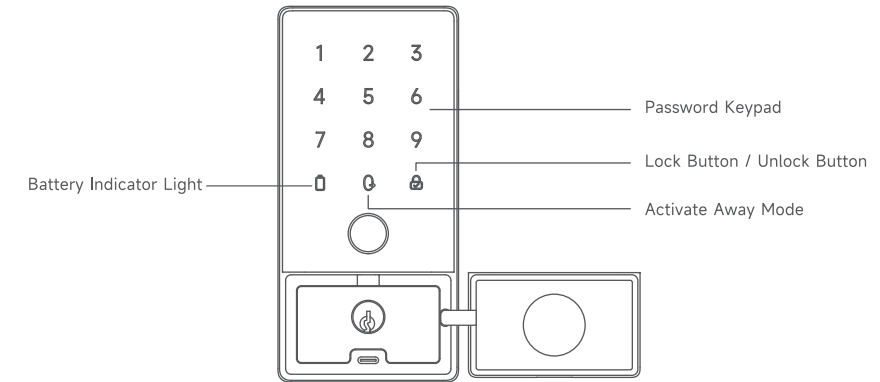


## Indoor Panel Status and Indicator

Status	Operations	Indicator Light	Voice
Successfully added to DreameHome/Matter	Added Successfully	The Status Indicator Light stops its white breathing effect.	—
Failed to add to DreameHome/Matter	Failed to Add	The Status Indicator Light flashes red twice.	Beeps twice
Trigger the Door Ajar Alarm	Door Open Time Exceeded	The Status Indicator Light flashes red for 5 seconds.	Beeps for 3 seconds
Trigger the Door Unlocked Alarm	Door Unlocked Time Exceeded	The Status Indicator Light flashes red for 5 seconds.	Beeps for 3 seconds
Trigger the Lock Bolt Fault Alarm	Lock Bolt Fault	The Status Indicator Light flashes red for 5 seconds.	Beeps for 3 seconds
Low Battery Alarm	Operate the Lock when the Battery is Low	The Status Indicator Light remains solid red as long as the battery is low and the Lock is active.	Beeps twice

## Outdoor Panel Settings and Operations

Buttons	Operations	Functions
Activate Away Mode Button	Click	<p><b>To Arm Away Mode:</b></p> <ul style="list-style-type: none"> <li>In App: Enable Away Mode.</li> <li>On Exit: When leaving, lock the door from inside → The Activate Away Mode button lights up for 7 seconds.</li> <li>Then: Press the button → Arms the mode and runs automations. Do nothing → Light turns off (mode not armed).</li> </ul> <p><b>Once Armed, Alarm Triggers if Lock is Opened:</b></p> <ul style="list-style-type: none"> <li>Indoors (via knob).</li> <li>Outdoors with a physical key.</li> </ul>
Lock Button / Unlock Button	Click	<p><b>To Lock the Door:</b></p> <ul style="list-style-type: none"> <li>Prerequisite: The door must be in the unlocked state.</li> <li>Action: Perform the locking action.</li> </ul> <p><b>To Verify Password (for Unlocking):</b></p> <ul style="list-style-type: none"> <li>Prerequisite: The door must be in the locked state.</li> <li>Step 1: Enter password on the keypad.</li> <li>Step 2: Press the button to verify and unlock.</li> </ul>
Password Keypad	Click	Input Password



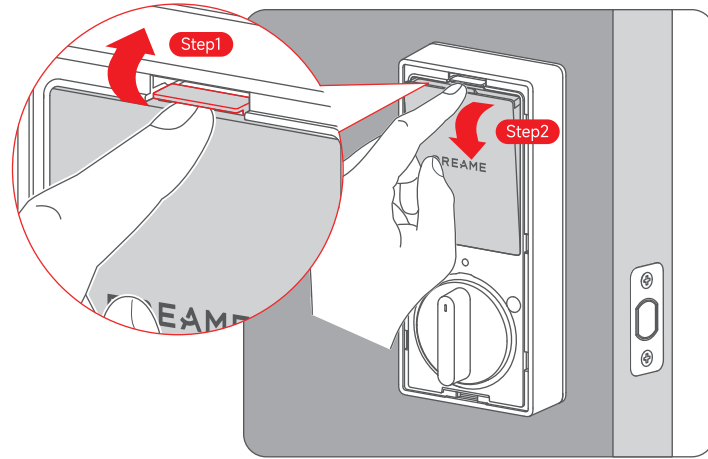
## Outdoor Panel Status and Indicator

Status	Operations	Indicator Light	Voice
Verification Successful	Verification	The Lock Button/Unlock Button Light flashes white once.	A Beep
Verification Failed	Verification	The whole Password Keypad flashes white twice.	Beeps twice
Low Battery Alarm	Operate the Lock when the Battery is Low	The Battery Indicator Light remains solid red as long as the battery is low and the Lock is active.	Beeps twice

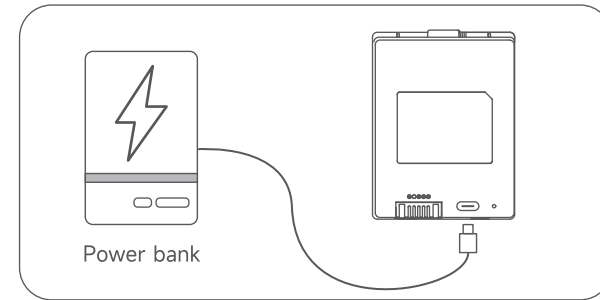
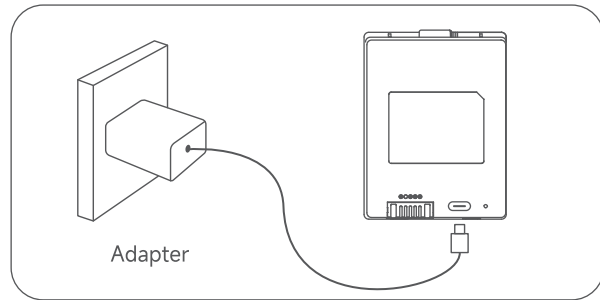
## 8 / Charging the Battery

### Remove the battery

The Li-ion Battery must be removed from the lock for recharging.

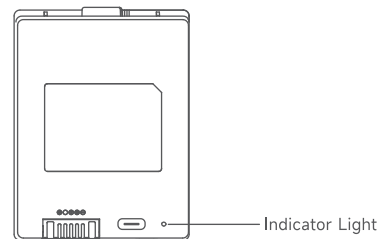


The Li-ion Battery must be removed from the lock for recharging. It supports standard charging using a certified 5V/2A USB-C power source (adapter or power bank). A full charge takes approximately 5 hours.



### Battery Indicator

Indicator Light	Status
Red	Charging
White	Fully charged

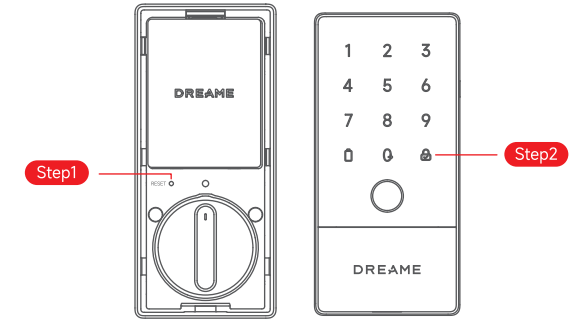


## 9 / Reset

Prerequisite: Ensure the Battery Indicator Light on Outdoor Panel is white.  
 Step 1: On the Indoor panel, use a tool to press and hold the Reset button for 3 seconds.  
 Step 2: Within 10 seconds, press the Unlock button on the Outdoor panel.  
 Result: The lock will be restored to its factory default settings.

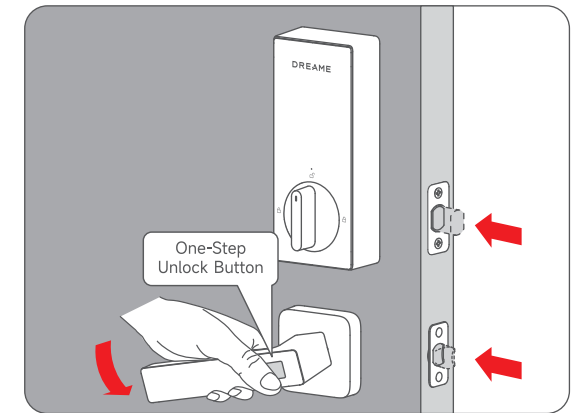
#### Note:

This action erases all data and settings.



## 10 / One-Step Unlock

The door lock supports fast one-step unlocking. This feature requires the additional purchase of the Dreame NAVO Smart Handle. After purchase and installation, please use the Dreamehome App to complete the pairing between the handle and the door lock. Once paired, you can unlock the door in one step upon exiting by simply pushing down the indoor handle and pressing the One-Step Unlock button.



# 11 / Basic Parameters

Name: Dreame NAVO Smart Lock A10

Model: B311

Battery Input: 3.6V Rechargeable Li-ion Battery

Operating Temperature:

Outdoor Panel: -35°C - 66°C (-31°F - 151°F)

Indoor Panel: 0°C - 49°C (32°F - 120°F)

Battery Pack Charging Temperature: 0°C - 45°C (32°F - 113°F)

Operating Humidity: 0 - 93% RH, No Condensation

Wireless Connection: Wi-Fi IEEE 802.11b/g/n 2.4GHz, BLE 6.0, Thread, NFC, 433MHz

Dimensions:

Outdoor Panel: 6-9/64" (156mm) × 2-61/64" (75mm) × 1-7/64" (28mm)

Indoor Panel: 6-9/16" (166.7mm) × 2-15/16" (74.9mm) × 1-9/32" (32.6mm)

Installation Requirements:

Hole Diameter: 1-1/2" (38mm) or 2-1/8" (54mm)

Door Thickness: 1-3/8" (35mm) - 2-9/32" (58mm)

Door Backset: 2-3/8" or 2-3/4" (60 or 70mm)

IC: 26444-B311

FCC ID: 2AXGD-B311

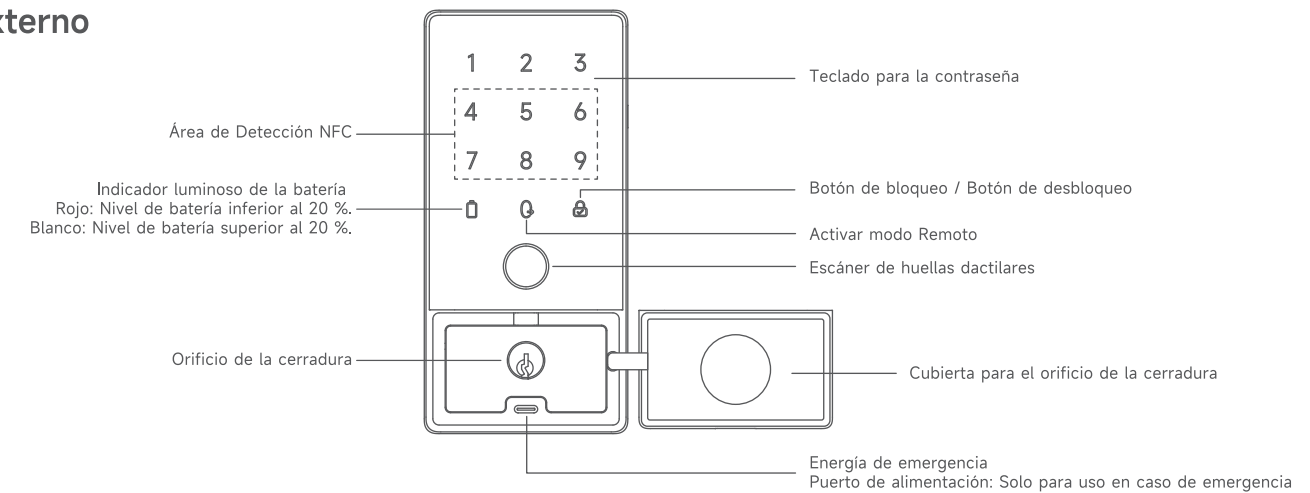
CAN ICES (B)/ NMB (B)

# 1 / Descripción del producto

ES

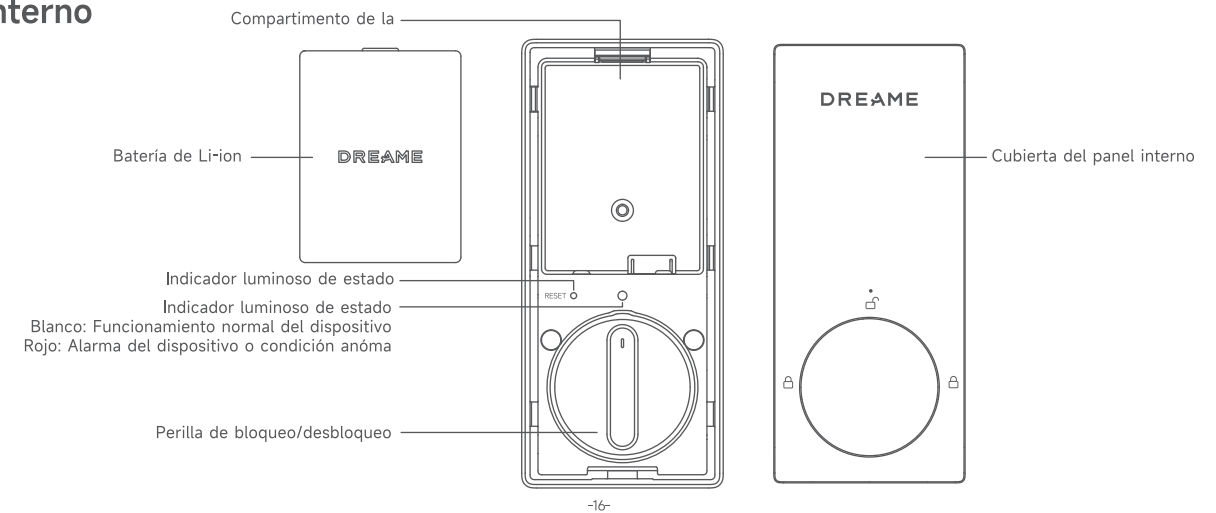
La cerradura inteligente Dreame NAVO A10 ofrece seguridad de grado 2 según la BHMA, un diseño elegante, una batería de larga duración, alertas en tiempo real y registros de acceso. Es totalmente compatible con «Matter over Thread» para una integración perfecta en su hogar inteligente.

## Panel externo

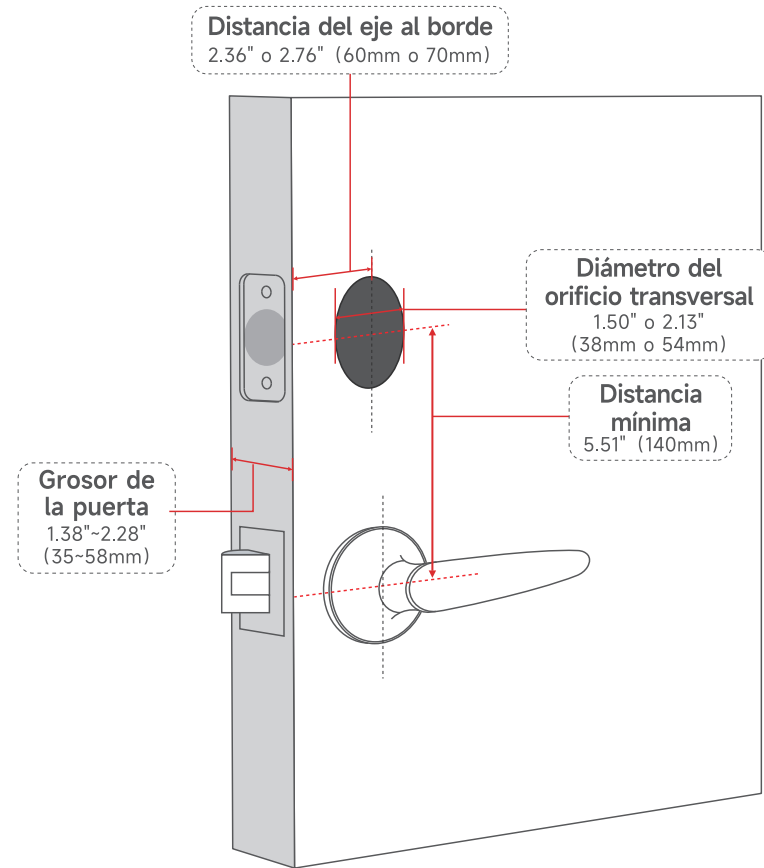


Nota: El «puerto de alimentación de emergencia» no sirve para cargar la batería y solo se puede utilizar para suministrar energía de emergencia a la cerradura.

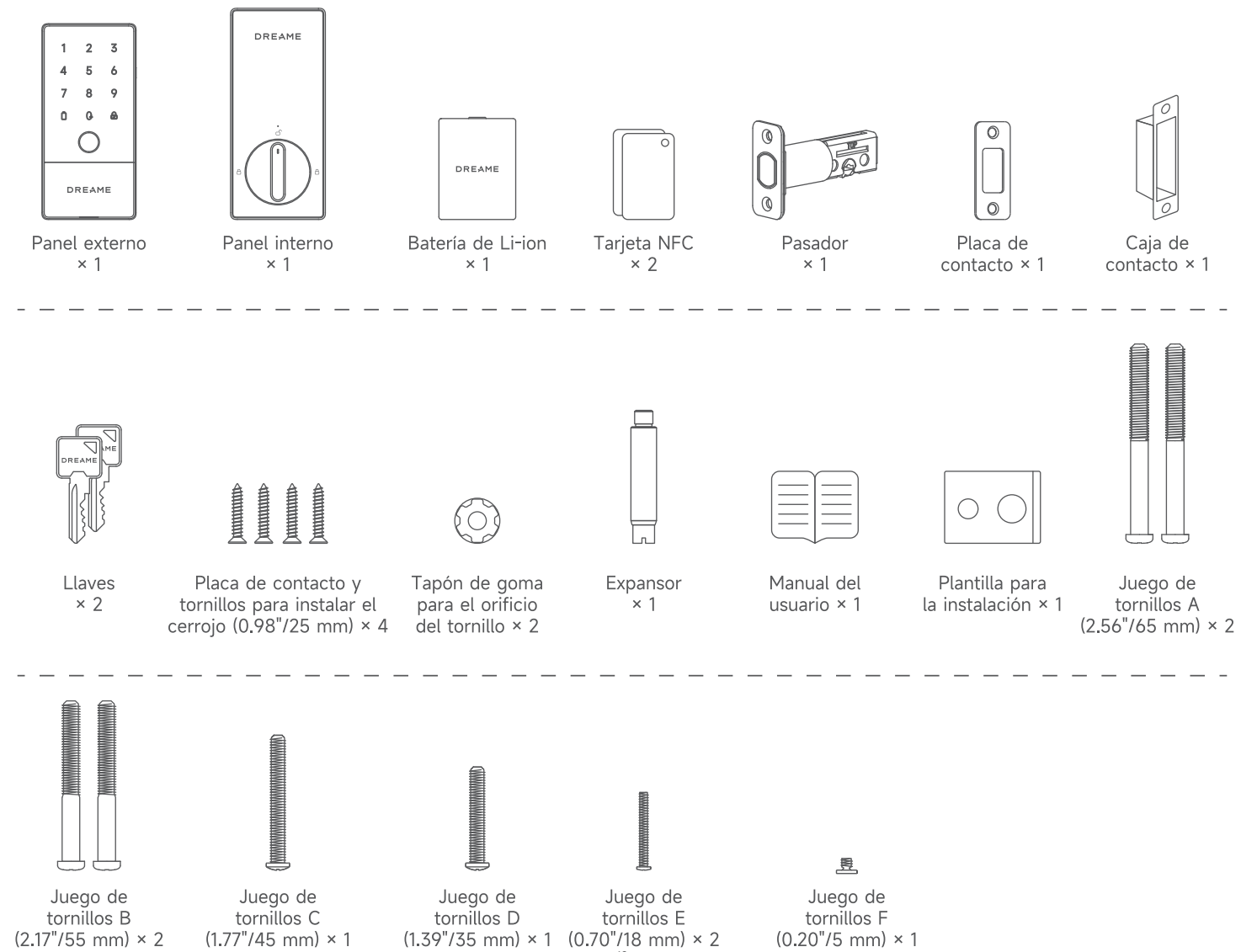
## Panel interno



## 2 / Prepare la puerta y compruebe las dimensiones



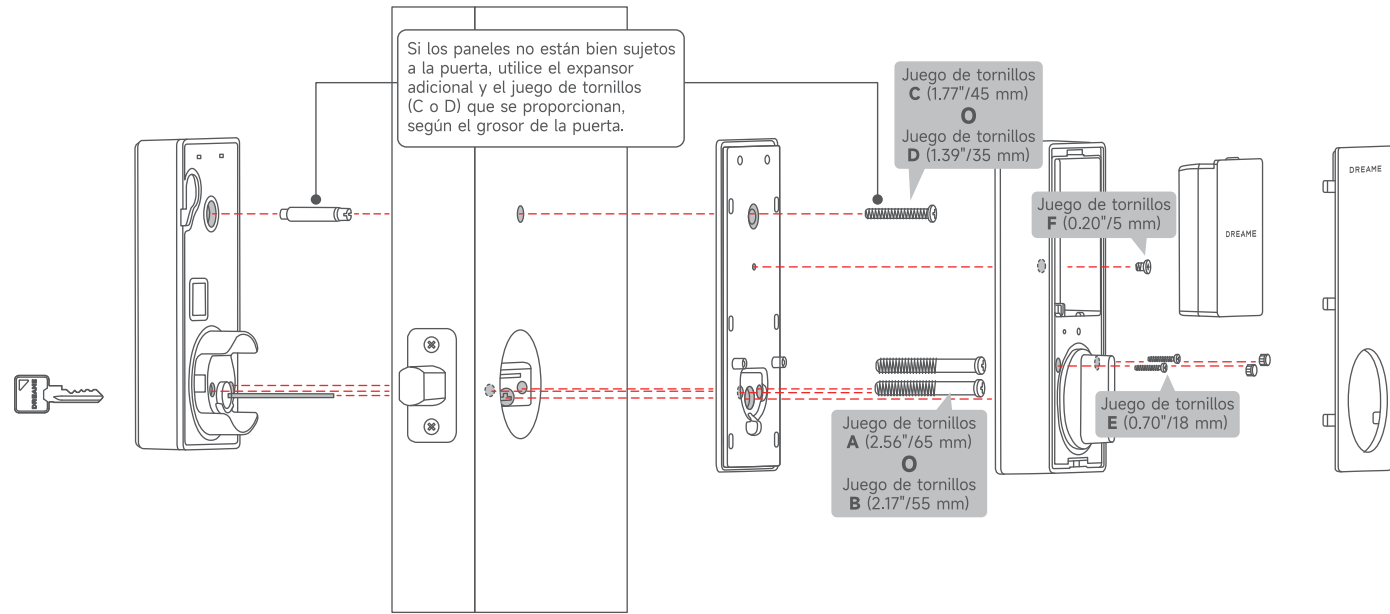
## 3 / Contenido del embalaje



# 4 / Instalación de la cerradura


**Nota:**

- Para puertas con un grosor de entre 48 y 58 mm, utilice los juegos de tornillos A y C.
- Para puertas con un grosor de entre 35 y 48 mm, utilice los juegos de tornillos B y D.



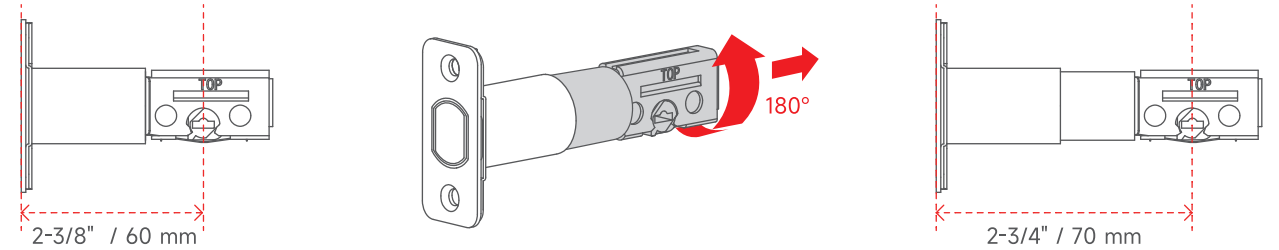
Consulte los pasos que se muestran en el video para completar la instalación de la cerradura de la puerta.



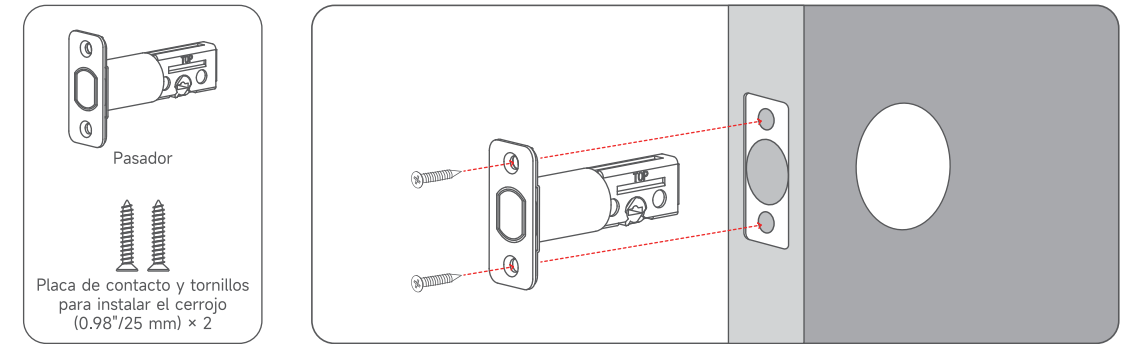
 Una vez instalada la cerradura inteligente, se recomienda guardar la llave mecánica en un lugar exterior seguro para poder usarla en caso de emergencia.

## Paso 1 Instalación del pasador

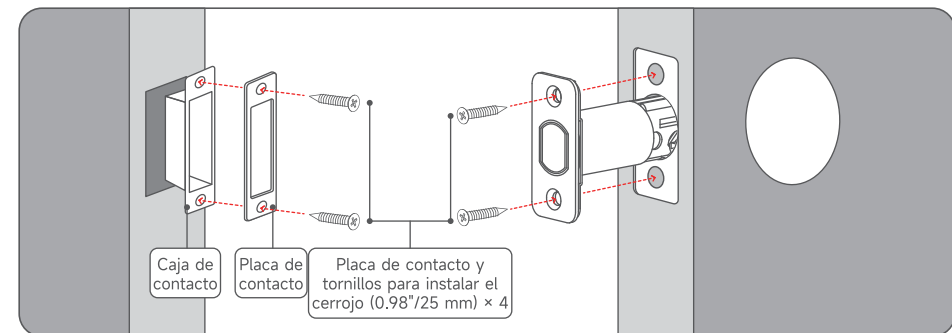
1. Compruebe su puerta para ver si el pasador requiere algún ajuste. Si la distancia del eje al borde es de 70 mm, gire la placa frontal 180° para ampliar la longitud.



2. Inserte y atornille el pasador en el marco de la puerta. Asegúrese de que la palabra «TOP» en el pasador esté orientada hacia arriba.



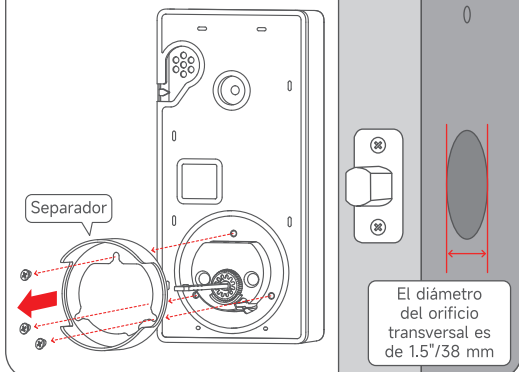
## Paso 2 Instalación de la placa de contacto



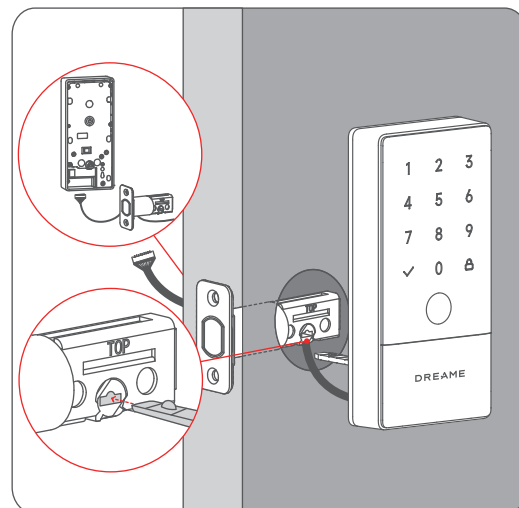
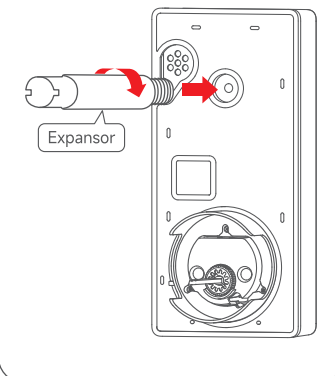
### Paso 3 Instalación del panel externo

Si tiene un orificio transversal de 38 mm, desmonte el separador antes de la instalación.

Solamente para orificios transversales de 38 mm



Si los paneles no están bien sujetos a la puerta, utilice el manguito de acoplamiento adicional.

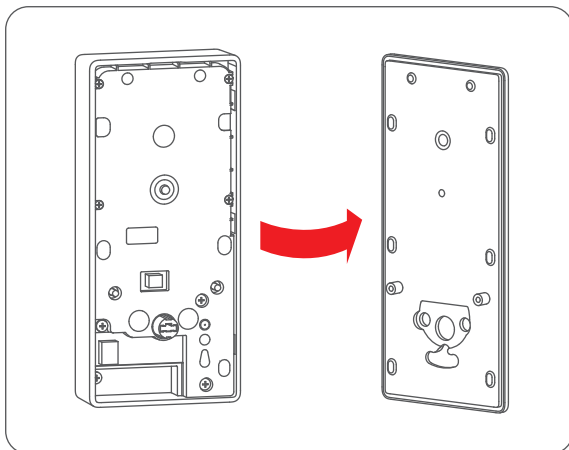


**NOTA:**

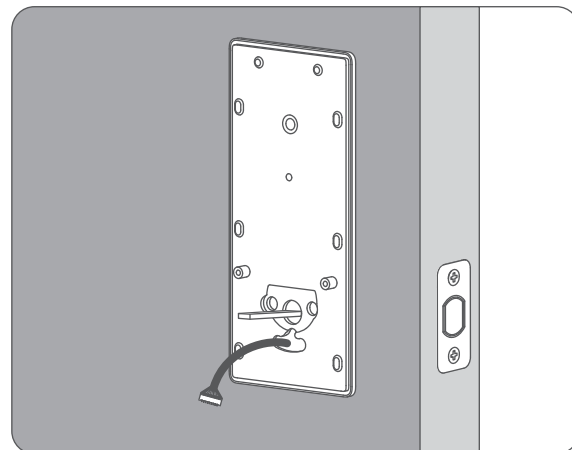
Asegúrese de que el pasador esté en posición retraída antes de continuar con la instalación. Además, NO deje la llave insertada en la cerradura durante la instalación.

### Paso 4 Instalación del panel interno

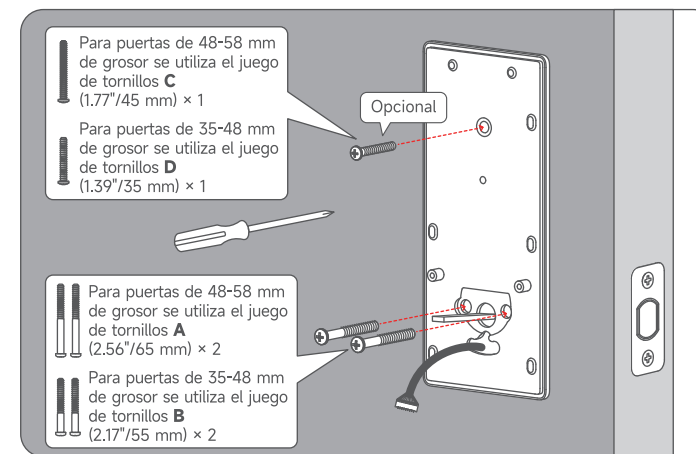
1. Desmonte el soporte de montaje del panel interno.



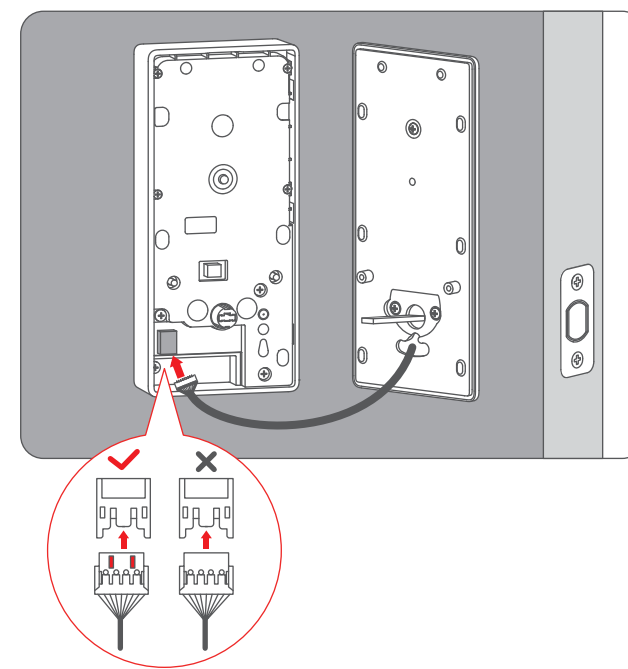
2. Pase los cables por el soporte de montaje.



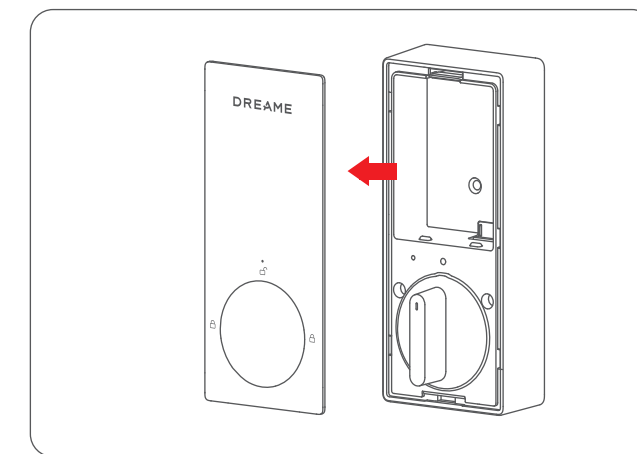
3. Fije el soporte de montaje con tornillos.



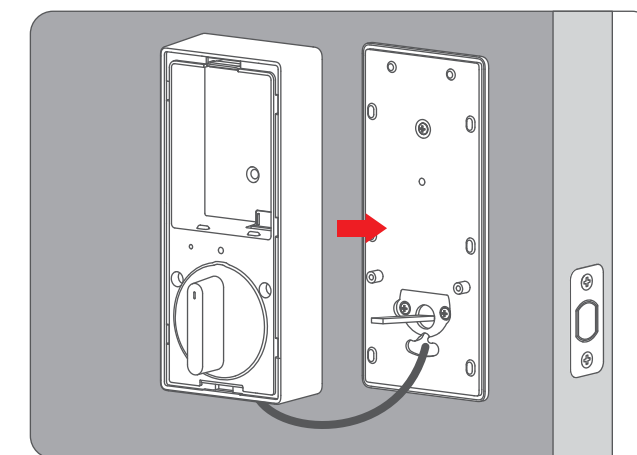
5. Conecte al panel interno.



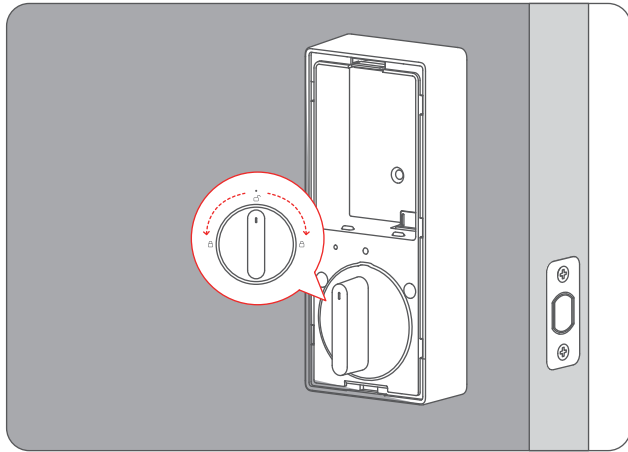
4. Retire la cubierta del panel interno.



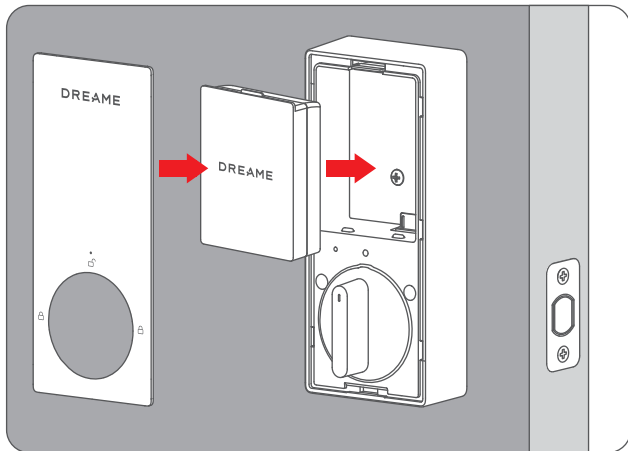
6. Monte el panel interno. Asegúrese de que ambos cables estén metidos en la cabina, en la parte posterior del panel interno.



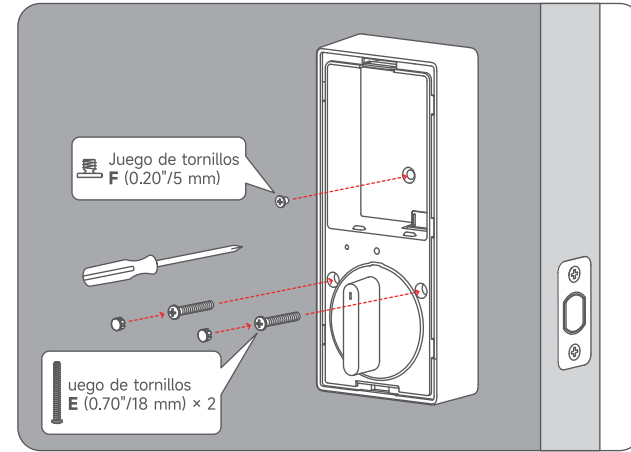
7. Compruebe si el pasador se retrae girando la perilla.



9. Inserte la batería de Li-ion tal como se muestra en la imagen.



8. Fije el Panel Interior con tornillos y luego instale los Tapones de goma para los orificios de los tornillos.



## 5 / Conectar a Dreamehome

### Descargue e instale la aplicación Dreamehome

Descargue e instale la aplicación Dreamehome desde Apple App Store, Google Play o escaneando el código QR proporcionado.



#### Añada el dispositivo

Emparejamiento mediante detección automática:

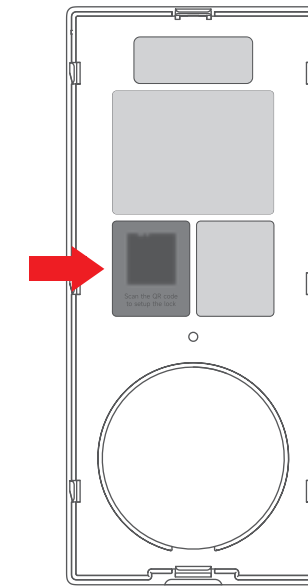
- Encienda la cerradura.
- Acerque su teléfono a la cerradura y abra la aplicación Dreamehome. La aplicación buscará automáticamente los dispositivos cercanos y los mostrará.
- Cuando aparezca la cerradura («Dreame NAVO Smart Lock A10») en la lista, selecciónela.
- Siga las instrucciones de la aplicación para completar el emparejamiento y la configuración.

Emparejamiento mediante adición manual:

- Encienda la cerradura.
- Abra la aplicación Dreamehome y pulse el ícono «+» (o «Añadir dispositivo») en la pantalla principal.
- Para añadir su cerradura, elija uno de los siguientes métodos:
- Escanee el código QR: Pulse «Escanear código QR» y apunte con la cámara de su teléfono al código QR que aparece en la cubierta del panel interior.
- Seleccione manualmente: Explore o busque en la lista de dispositivos y seleccione «Dreame NAVO Smart Lock A10».
- Siga las instrucciones que aparecen en pantalla para completar el emparejamiento y la configuración.

#### Nota:

- Para una configuración más fiable, mantenga el teléfono cerca del dispositivo durante el emparejamiento para asegurarse de que permanezca dentro del alcance del Bluetooth.
- Dado que la aplicación Dreamehome se actualiza periódicamente, es posible que cambien la interfaz y los pasos. Siga las instrucciones de la aplicación para obtener la guía más actualizada.



## 6 / Conéctese a los ecosistemas Matter

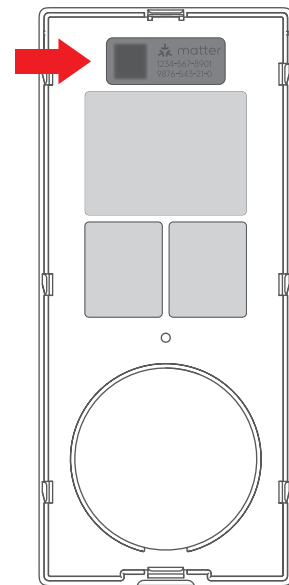
- Para la vinculación inicial de Matter, asegúrese de tener un controlador Matter 2 en 1 y un router Thread Border. Encienda la cerradura y, a continuación, utilice la aplicación de su ecosistema de terceros para escanear el código QR Matter que se encuentra en la cubierta del panel interior o introduzca su código de configuración.

- Una vez que la cerradura se haya vinculado al ecosistema Matter, se podrá utilizar la aplicación Matter Controller para compartirla con otras plataformas compatibles.

- Para vincular la cerradura a un nuevo ecosistema y eliminar la vinculación actual, primero elimine la cerradura de su aplicación de control actual y, a continuación, restablezca los ajustes de fábrica de la cerradura de la puerta. Esto devolverá la cerradura a su estado de emparejamiento inicial.

### Nota:

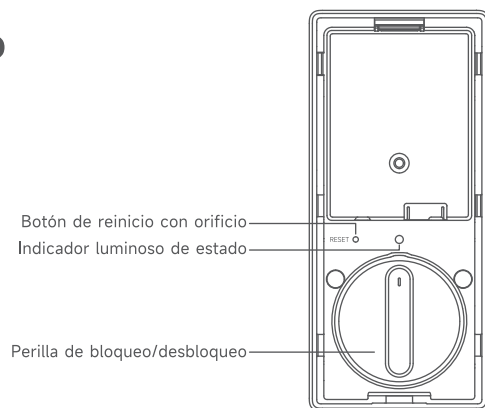
En las primeras etapas del ecosistema Matter, las diferentes plataformas admiten distintas funciones. Por ejemplo, algunas plataformas no admiten la adición de contraseñas para el bloqueo de puertas. Para una mejor experiencia de usuario, recomendamos añadir el dispositivo en la aplicación Dreamehome.



## 7 / Configuración y operaciones de la cerradura

### Configuración y funcionamiento del panel interno

Botones	Operaciones	Funciones
Botón de reinicio	Haga clic	Active el modo de emparejamiento para emparejar con la aplicación Dreamehome u otros ecosistemas Matter.
	Mantenga pulsado durante 3 segundos	Inicie el proceso de restablecimiento
Perilla de bloqueo/desbloqueo	Gire la perilla	Mueva el pestillo hacia dentro o hacia fuera hasta que la cerradura quede completamente bloqueada o desbloqueada.

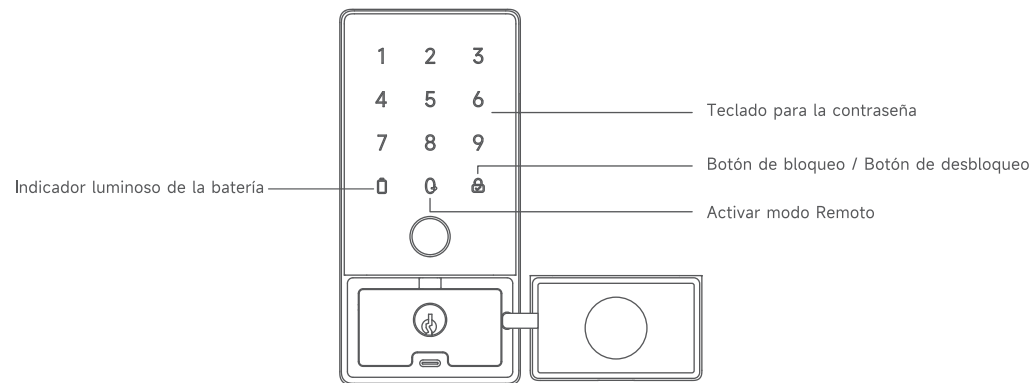


## Estado e indicador del panel interno

Estado	Operaciones	Indicador luminoso	Voz
Se ha añadido correctamente a DreameHome/Matter	Se ha añadido correctamente	El indicador luminoso de estado deja de parpadear en blanco.	—
No se ha podido añadir a DreameHome/Matter.	No se ha podido añadir	El indicador luminoso de estado parpadea dos veces en rojo.	Suena dos veces
Activa la alarma de puerta entreabierta	Se ha superado el tiempo de la puerta abierta	TLa luz indicadora de estado parpadea en rojo durante 5 segundos.	Suena durante 3 segundos
Activa la alarma de puerta desbloqueada	Se ha excedido el tiempo de desbloqueo de la puerta	La luz indicadora de estado parpadea en rojo durante 5 segundos.	Suena durante 3 segundos
Activar la alarma de fallo del pasador de la cerradura	Fallo del pasador de la cerradura	La luz indicadora de estado parpadea en rojo durante 5 segundos.	Suena durante 3 segundos
Alarma de batería baja	Accione el bloqueo cuando la batería esté baja	El indicador luminoso de estado permanece en rojo fijo mientras la batería esté baja y el bloqueo esté activo.	Suena dos veces

### Configuración y funcionamiento del panel externo

Botones	Operaciones	Funciones
Activar el botón del modo Remoto	Haga clic	<p><b>Para armar el modo Remoto:</b></p> <ul style="list-style-type: none"> <li>En la aplicación: Activar modo Remoto.</li> <li>Al salir: Al salir, cierre la puerta con llave desde dentro → El botón Activar modo Remoto se ilumina durante 7 segundos.</li> <li>Entonces: Presionar el botón → Arma el modo y ejecuta las automatizaciones. No hacer nada → El indicador luminoso se apaga (el modo no se arma).</li> </ul> <p><b>Una vez armado, la alarma se dispara si se abre la cerradura:</b></p> <ul style="list-style-type: none"> <li>En el interior (mediante la perilla).</li> <li>En el exterior mediante una llave física.</li> </ul>
Botón de bloqueo / Botón de desbloqueo	Haga clic	<p><b>Para cerrar la puerta con llave:</b></p> <ul style="list-style-type: none"> <li>Prerrequisito: La puerta debe estar desbloqueada.</li> <li>Acción: Realice la acción de bloqueo.</li> </ul> <p><b>Verificar la contraseña (para desbloquear):</b></p> <ul style="list-style-type: none"> <li>Prerrequisito: La puerta debe estar bloqueada.</li> <li>Paso 1: Introduzca la contraseña en el teclado.</li> <li>Paso 2: Pulse el botón para verificar y desbloquear.</li> </ul>
Teclado para la contraseña	Haga clic	Introducir contraseña



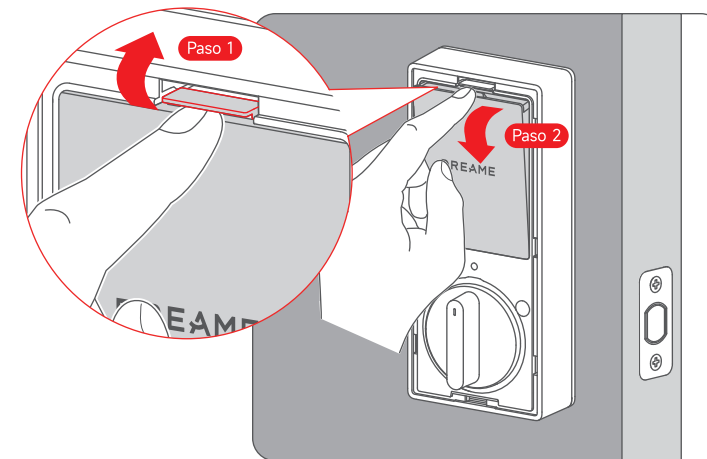
## Estado e indicador del panel externo

Estado	Operaciones	Indicador luminoso	Voz
Verificación exitosa	Verificación	La luz del botón de bloqueo/desbloqueo parpadea una vez en blanco.	Un pitido
Fallo de verificación	Verificación	Todo el teclado de contraseñas parpadea dos veces en blanco.	Suena dos veces
Alarma de batería baja	Accione el bloqueo cuando la batería esté baja	El indicador luminoso de la batería permanece en rojo fijo mientras la batería esté baja y el bloqueo esté activo.	Suena dos veces

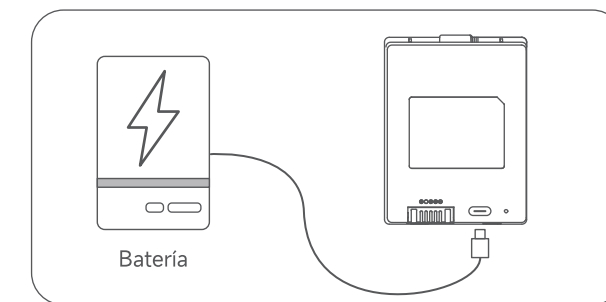
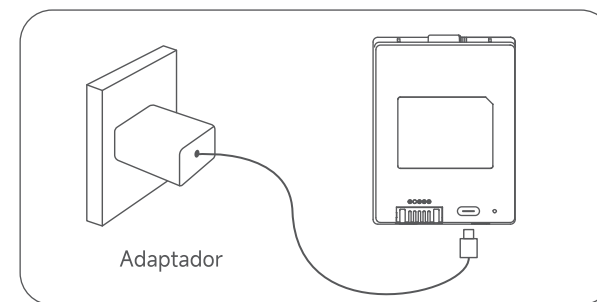
## 8 / Carga de la batería

### Retire la batería

La batería de Li-ion debe retirarse de la cerradura para recargarla.

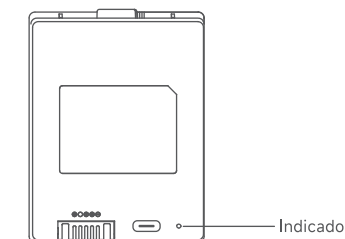


La batería de Li-ion debe retirarse de la cerradura para recargarla. Admite la carga estándar mediante una fuente de alimentación USB-C certificada de 5 V/2 A (adaptador o batería externa). La carga completa tarda aproximadamente 5 horas.



### Indicador de la batería

Indicador luminoso	Estado
Rojo	Carga
Blanco	Carga completa



## 9 / Reinicio

Prerrequisito: Asegúrese de que el indicador luminoso de la batería en el panel exterior sea blanco.

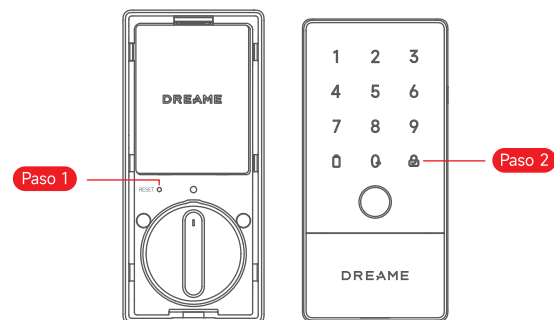
Paso 1: En el panel interior, utilice una herramienta para mantener pulsado el botón de reinicio durante 3 segundos.

Paso 2: En un plazo de 10 segundos, pulse el botón Desbloquear en el panel exterior.

Resultado: El bloqueo se restablecerá a su configuración predeterminada de fábrica.

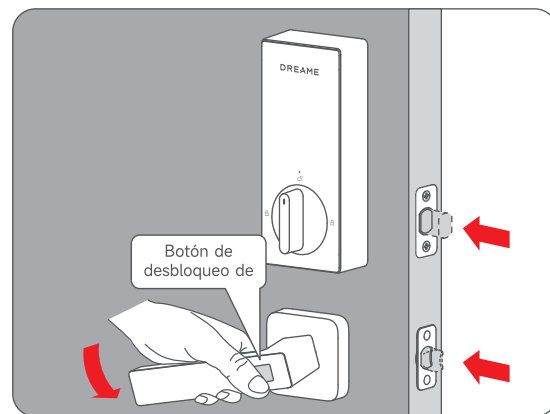
### Nota:

Esta acción borra todos los datos y ajustes.



## 10 / Desbloqueo en un solo paso

La cerradura de la puerta permite un desbloqueo rápido en un solo paso. Esta función requiere la compra adicional del mango inteligente Dreame NAVO. Después de la compra y la instalación, utilice la aplicación Dreamehome para completar el emparejamiento entre el mango y la cerradura de la puerta. Una vez emparejados, puede desbloquear la puerta en un solo paso al salir, simplemente empujando hacia abajo el mango interior y pulsando el botón de desbloqueo en un solo paso.



## 11 / Parámetros básicos

Nombre: Cerradura inteligente Dreame NAVO A10

Modelo: B311

Entrada de la batería: 3.6 V Batería recargable de Li-ion

Temperatura de funcionamiento:

Panel externo: -35 °C - 66 °C (-31 °F - 151 °F)

Panel interno: 0 °C - 49 °C (32 °F - 120 °F)

Temperatura de carga del paquete de baterías: 0 °C - 45 °C (32 °F - 113 °F)

Humedad de funcionamiento: 0 - 93 % HR, Sin condensación

Conexión inalámbrica: Wi-Fi IEEE 802.11b/g/n 2.4 GHz, BLE 6.0, Thread, NFC, 433 MHz

Dimensiones:

Panel externo: 6-9/64" (156 mm) × 2-61/64" (75 mm) × 1-7/64" (28 mm)

Panel interno: 6-9/16" (166.7 mm) × 2-15/16" (74.9 mm) × 1-9/32" (32.6 mm)

Requisitos de instalación:

Diámetro del orificio: 1-1/2" (38 mm) o 2-1/8" (54 mm)

Grosor de la puerta: 1-3/8" (35 mm) - 2-9/32" (58 mm)

Distancia del eje al borde: 2-3/8" o 2-3/4" (60 o 70 mm)

IC: 26444-B311

FCC ID: 2AXGD-B311

CAN ICES (B)/ NMB (B)

## Safety Instructions

### Warning:

- replacement of a battery with an incorrect type that can defeat a safeguard;
- disposal of a battery into fire or a hot oven, or mechanically crushing or cutting of a battery, that can result in an explosion;
- leaving a battery in an extremely high temperature surrounding environment that can result in an explosion or the leakage of flammable liquid or gas; and
- a battery subjected to extremely low air pressure that may result in an explosion or the leakage of flammable liquid or gas.

### Attention:

- remplacement d'une batterie par un type incorrect pouvant supprimer une protection
- mise au rebut d'une batterie dans un feu ou dans un four chaud, ou écrasement mécanique ou coupure d'une batterie, susceptible de provoquer une explosion;
- maintien d'une batterie dans un environnement à très haute température pouvant provoquer une explosion ou la fuite de liquide ou de gaz inflammables; et
- batterie soumise à une pression de l'air extrêmement faible pouvant provoquer une explosion ou la fuite de liquide ou de gaz inflammables.



CAUTION RISK OF EXPLOSION IF BATTERY IS REPLACED BY AN INCORRECT TYPE. DISPOSE OF USED BATTERIES ACCORDING TO THE INSTRUCTIONS



ATTENTION RISQUE D'EXPLOSION SI LA BATTERIE EST REMPLACÉE PAR UN TYPE INCORRECT. ÉLIMINER LES BATTERIES USÉES SELON LES INSTRUCTIONS

This equipment is not suitable for use in locations where children are likely to be present. This equipment is not intended for use by children.

Do not use the product in any way other than described herein in order to avoid personal injury or property damage.

User should comply with the laws and regulations of the corresponding countries and regions where the equipment is located (used), abide by professional ethics, pay attention to safety obligations, and strictly prohibit the use of our products or equipment for any illegal purposes. Our company will not be responsible for any violators' legal liability under any circumstances.

## Notice (United States Of America) FCC Statement

This device complies with Part 15 of the FCC Rules. Operation is subject to the following two conditions: (1) this device may not cause harmful interference, and (2) this device must accept any interference received, including interference that may cause undesired operation.

Warning: Changes or modifications not expressly approved by the party responsible for compliance could void the user's authority to operate the equipment.

Note: This equipment has been tested and found to comply with the limits for a Class B digital device, pursuant to Part 15 of the FCC Rules. These limits are designed to provide reasonable protection against harmful interference in a residential installation.

This equipment generates uses and can radiate radio frequency energy and, if not installed and used in accordance with the instructions, may cause harmful interference to radio communications. However, there is no guarantee that interference will not occur in a particular installation. If this equipment does cause harmful interference to radio or television reception, which can be determined by turning the equipment off and on, the user is encouraged to try to correct the interference by one or more of the following measures: (1) Reorient or relocate the receiving antenna. (2) Increase the separation between the equipment and receiver. (3) Connect the equipment into an outlet on a circuit different from that to which the receiver is connected. (4) Consult the dealer or an experienced radio/TV technician for help.

FCC Radio Frequency Exposure Statement

The device has been evaluated to meet general RF exposure requirements. The device can be used in fixed/mobile exposure condition. The min separation distance is 20cm.

Notice: Shielded cables

All connections to other computing devices must be made using shielded cables to maintain compliance with FCC regulations.

The following importer is the responsible party

Company Name: ANTEK SERVICE INC

Address: 901 N PENNSYLVANIA ST STE O DENVER, CO 80203 Unite States

Telephone: +01303-8006306

## Notice (Canada)

This device complies with Industry Canada licence-exempt RSS standard(s). Operation is subject to the following two conditions:

(1) this device may not cause interference, and

(2) this device must accept any interference, including interference that may cause undesired operation of the device.

Le présent appareil est conforme aux CNR d'Industrie Canada applicables aux appareils radio exempts de licence. L'exploitation est autorisée aux deux conditions suivantes:

(1) l'appareil n' doit pas produire de brouillage, et

(2) l'utilisateur de l'appareil doit accepter tout brouillage radioélectrique subi, même si le brouillage est susceptible d'en compromettre le fonctionnement.

This Class B digital apparatus complies with Canadian ICES-003.

Cet appareil numérique de la classe B est conforme à la norme NMB-003 du Canada.

IC RF Statement:

When using the product, maintain a distance of 20cm from the body to ensure compliance with RF exposure requirements.

Lors de l'utilisation du produit, maintenez une distance de 20 cm du corps afin de vous conformer aux exigences en matière d'exposition RF.

## NOTICE (Australia)

Do not use the Device in the environment at too high or too low temperature, never expose the Device under strong sunshine or too wet environment.

The suitable temperature for the device and accessories is 0°C to 35°C (Charging temperature is 0°C to 45°C).

It is recommended to supply the device in an environment with a temperature that ranges from 5°C-25°C.

When supplying, please place the device in an environment that has a normal room temperature and good ventilation.

The adapter shall be installed near the equipment and shall be easily accessible.

Please ensure to use only the adapter offered by the manufacturer. Using unauthorized adapter may cause danger and violate the authorization of the device and the guarantee article.

This adapter is for indoor use only. The plug considered as disconnect device of adapter.

Our goods come with guarantees that cannot be excluded under the Australian Consumer Law.

You are entitled to a replacement or refund for a major failure and compensation for any other reasonably foreseeable loss or damage.

You are also entitled to have the goods repaired or replaced if the goods fail to be of acceptable quality and the failure does not amount to a major failure.




Your product is designed and manufactured with high quality materials and components, which can be recycled and reused.



This symbol means the product must not be discarded as household waste, and should be delivered to an appropriate collection facility for recycling. Proper disposal and recycling helps protect natural resources, human health and the environment. For more information on disposal and recycling of this product, contact your local municipality, disposal service, or the shop where you bought this product.

## Caution

1. Remove and immediately recycle or dispose of used batteries according to local regulations and keep away from children. Do NOT dispose of batteries in household trash or incinerate
2. Even used batteries may cause severe injury or death.
3. Call a local poison control center for treatment information.If you think batteries might have been swallowed or placed inside any part of the body, seek immediate medical attention.
4. The product contains a non-replaceable coin battery (CR1220, 3V), If the coin / button cell battery is swallowed, it can cause severe internal burns in just 2 hours and can lead to death.
5. Non-rechargeable batteries are not to be recharged.
6. Do not force discharge, recharge, disassemble, heat above (50°C) or incinerate. Doing so may result in injury due to venting, leakage or explosion resulting in chemical burns.

<b>⚠ WARNING</b>	
<b>INGESTION HAZARD:</b> This product contains a button cell or coin battery. <b>DEATH</b> or serious injury can occur if ingested. A swallowed button cell or coin battery can cause Internal Chemical <b>Burns</b> in as little as <b>2 hours</b> . <b>KEEP</b> new and used batteries <b>OUT OF REACH of CHILDREN</b> <b>Seek immediate medical attention</b> if a battery is suspected to be swallowed or inserted inside any part of the body.	

## EN Disclaimer

This Disclaimer applies to the smart door lock products sold by us. By using this product, you acknowledge that you have read, understood, and agreed to all terms of this Disclaimer.

This smart door lock is only designed for door locking and unlocking control, and does not provide anti-theft function. We shall not be liable for any property loss, personal injury or other accidents arising from factors unrelated to the product's inherent quality or performance defects. We shall not be liable for any damage, malfunction or related losses caused by the following circumstances:

- Natural disasters (including but not limited to earthquakes, lightning strikes, typhoons, floods, etc.), fires not caused by the door lock itself;
- Damage resulting from improper third-party operations during transportation or installation (such as dropping, severe vibration, etc.);
- Intentional or negligent misuse by users, including but not limited to prolonged exposure of the door lock to harsh environments such as direct sunlight, rain, extreme high or low temperatures (beyond the operating temperature range specified in Basic Parameters);
- Damage, paint peeling or other problems caused by failure to follow the instructions in the product manual or forced disassembly of the door lock.

We shall not be liable for lockout incidents, locksmith service fees or related losses arising from battery power depletion due to failure to replace batteries promptly after the low-battery alert, or from prolonged absence from the premises. Recommendation: After installation, keep the mechanical key in a safe outdoor location for emergency use.

We shall not be liable for any door lock malfunction, safety incident or other losses caused by unauthorized maintenance, debugging or modification of the door lock, or by the use of counterfeit or non-genuine accessories during installation, reinstallation or modification.

We shall not be liable for any direct or indirect incidental losses resulting from the use or misuse of this product, including but not limited to loss or tampering of stored access data, loss of business profits, business interruption, property theft, lockout due to battery power depletion, etc. Matters not covered herein shall be governed by the relevant national laws and regulations. We reserve the right to revise this Disclaimer, and the revised version will be published on the official website or sales platforms.

## ES Aviso legal

Esta declaración se aplica a productos de cerraduras inteligentes vendidos por nosotros. Al usar este producto, usted reconoce que ha leído, entendido y aceptado todos los términos de este aviso legal.

Esta cerradura inteligente solo se ha diseñado para control de cierre y apertura de puertas, y no proporciona una función antirrobo. No seremos responsables de pérdidas en la propiedad, lesiones u otros accidentes que surjan por factores no relacionados con la calidad inherente del producto o defectos de funcionamiento.

No seremos responsables de daños, disfunción o pérdidas relacionadas provocadas por las siguientes circunstancias:

- . Desastres naturales (incluidos entre otros, terremotos, impactos de rayos, tifones, inundaciones, etc.), incendios no provocados por la propia cerradura;
- . Cualquier daño resultante de operaciones inapropiadas por parte de terceros durante el transporte o la instalación (tales como caídas, fuerte vibración, etc.);
- . Uso intencionado o uso indebido negligente por parte de los usuarios, incluidos, entre otros, exposición prolongada de la cerradura a ambientes duros tales como luz solar directa, lluvia, temperaturas extremas altas o bajas (más allá del intervalo de temperaturas de funcionamiento especificado en los Parámetros Básicos);
- . Daño, pintura despegada u otros problemas provocados por no seguir las instrucciones del manual del producto o desensamblaje forzado de la cerradura.

No seremos responsables de incidentes de bloqueo, tarifas de servicio de cerrajeros o pérdidas relacionadas que surjan por agotamiento de las baterías o por no sustituir las baterías a tiempo tras una alerta de poca batería, o por ausencia prolongada en las instalaciones. Recomendación: Después de la instalación, mantenga la llave mecánica en un lugar seguro en exteriores para casos de emergencia.

No seremos responsables de una disfunción de la cerradura, incidente de seguridad u otras pérdidas provocadas por mantenimiento no autorizado, depuración o modificación de la cerradura, o por el uso de accesorios falsificados o no genuinos durante la instalación, reinstalación o modificación.

No seremos responsables de pérdidas incidentales directas o indirectas resultantes del uso o mal uso de este producto, incluyendo, entre otros, pérdida o sabotaje de datos de acceso almacenados, pérdida de beneficios empresariales, interrupción del negocio, robo a la propiedad, bloqueo debido a agotamiento de la batería, etc.

Asuntos no cubiertos en el presente documento serán regulados por las leyes y reglamentos nacionales pertinentes.

Nos reservamos el derecho a revisar este descargo de responsabilidad, y la versión revisada se publicará en el sitio web oficial o en plataformas de venta.